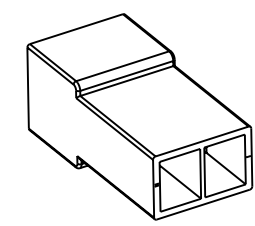
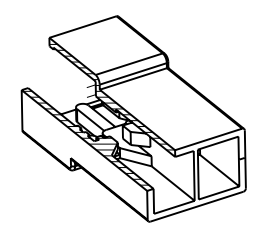
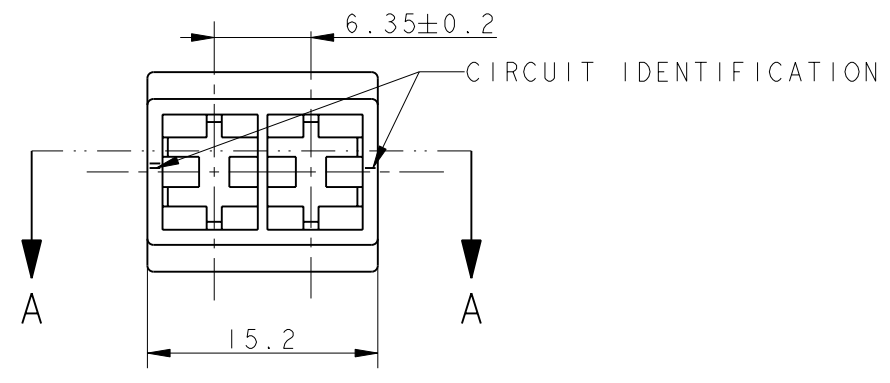


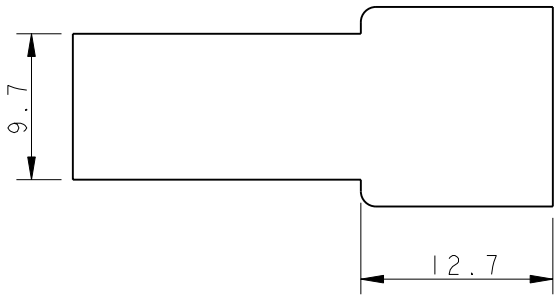
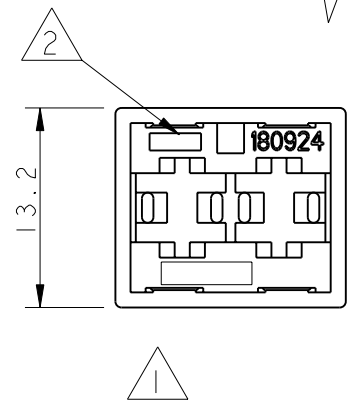
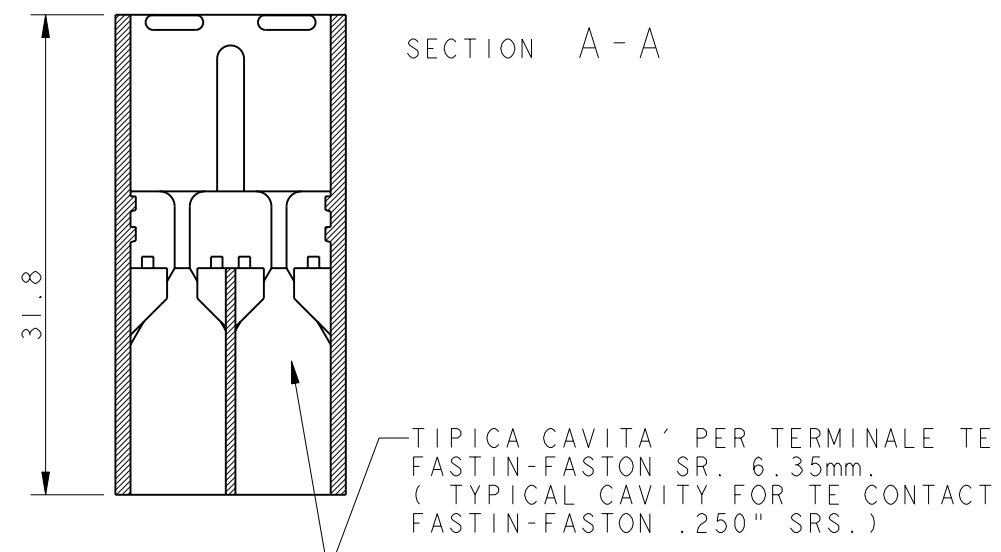
THIS DRAWING IS UNPUBLISHED. RELEASED FOR PUBLICATION 2002
 © COPYRIGHT 2002 ALL RIGHTS RESERVED.

LOC	DIST	REVISIONS			
P	LTR	DESCRIPTION	DATE	DWN	APVD
		AM9	CIRCUIT IDENTIFICATION CORRECTED	30JUN2011	PKS RRP



SCALE 1:1

- 1 MARCHIO (TRADEMARK / LOGO)
- 2 NUMERO DI IMPRONTA STAMPO (MOULD CAVITY IDENTIFICATION NO.)
- 3 RISERVATO PER TE JAPAN (RESTRICTED FOR TE JAPAN)
- 4 NON DISPONIBILE DA TE ITALIA (NO MORE AVAILABLE FROM TE ITALY)
- 5 RISERVATO PER TE DE FRANCE (RESTRICTED FOR TE DE FRANCE)
- 6 P/Ns 180924-0/-1/-5/2-...-0: DISPONIBILE DA TE GB VERSIONE CON CAVITA' ASIMMETRICHE, RISPETTIVAMENTE CON I P/Ns 1337024-1/-2/-3/-4. (P/Ns 180924-0/-1/-5/2-...-0: ASYMMETRIC CAVITIES VERSION AVAILABLE FROM TE GB RESPECTIVELY WITH P/Ns 1337024-1/-2/-3/-4).
- 7 ACCEPTED ONE RETENTION RIB FOR THE TOTAL LENGTH OF THE HOUSING ON BOTH SIDES.
- 8 OBSOLETE PARTS: OBSOLETE CIS STREAMLINING PER D.RENAUD/D.SINISI

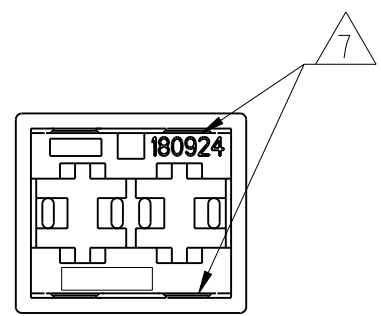


8 OBSOLETE

8 OBSOLETE

NOTE	COLORE (COLOUR)	MATERIALE (MATERIAL)	REV.	NUMERO (PART NUMBER)
	3 NATURALE (NATURAL)	PA 6.6 (VERGINE) (PA 6.6, VIRGIN)	AM	9-180924-0
	4 NATURALE (NATURAL)	PA 6.6 UL94-V0 (PA 6.6 UNFILLED UL94-V0)	AM	4-180924-0
	5 NATURALE (NATURAL)	PA 6.6 (PA 6.6 UNFILLED)	AM	3-280924-0
	4 VIOLETTO (VIOLET)	PA 6.6 (PA 6.6 UNFILLED)	AM	0-180924-8
	4 MARRONE (BROWN)		AM	0-180924-6
	6 NERO (BLACK)		AM	0-180924-5
	4 GIALLO (YELLOW)		AM	0-180924-4
	6 ROSSO (RED)		AM	0-180924-1
	6 NATURALE (NATURAL)		AM	0-180924-0

ALTERNATIVE VIEW FOR RETENTION RIBS



THIS DRAWING IS A CONTROLLED DOCUMENT.		DWN 09JUL2002 H. YAALI	TE Connectivity	
DIMENSIONS: mm		CHK - C. TARTARI		
TOLERANCES UNLESS OTHERWISE SPECIFIED:		APVD -	NAME FASTIN-FASTON Connector, .250 srs. TAB HOUSING, 2 POSITIONS	
0 PLC ±-		PRODUCT SPEC 108-20020	SIZE CAGE CODE DRAWING NO RESTRICTED TO	
1 PLC ±0.3		APPLICATION SPEC -	A300779 C-180924	
2 PLC ±-		WEIGHT 2.2 g	SCALE 2:1 SHEET 1 OF 1 REV AM9	
3 PLC ±-		CUSTOMER DRAWING		
4 PLC ±-				
4 PLC ANGLES ±2°				
MATERIAL SEE TABLE				
FINISH SEE TABLE				