

1 - TERMINALS



RINGS

|                       |                    |
|-----------------------|--------------------|
| Non-Insulated .....   | <a href="#">2</a>  |
| Vinyl Insulated ..... | <a href="#">8</a>  |
| Nylon Insulated ..... | <a href="#">11</a> |
| Flag Terminals .....  | <a href="#">15</a> |



SPADES

|                       |                    |
|-----------------------|--------------------|
| Non-Insulated .....   | <a href="#">20</a> |
| Vinyl Insulated ..... | <a href="#">21</a> |
| Nylon Insulated ..... | <a href="#">24</a> |



FLANGED SPADES

|                       |                    |
|-----------------------|--------------------|
| Non-Insulated .....   | <a href="#">27</a> |
| Vinyl Insulated ..... | <a href="#">28</a> |
| Nylon Insulated ..... | <a href="#">31</a> |



LOCKING SPADES

|                       |                    |
|-----------------------|--------------------|
| Non-Insulated .....   | <a href="#">33</a> |
| Vinyl Insulated ..... | <a href="#">34</a> |
| Nylon Insulated ..... | <a href="#">36</a> |



|                    |                    |
|--------------------|--------------------|
| TUBULAR LUGS ..... | <a href="#">37</a> |
|--------------------|--------------------|



## Non-Insulated Ring Terminals

### 2622 AWG Non-Insulated Ring

**Material:** Tin Plated Copper with Brazed Seam

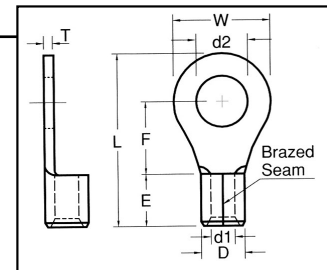
**Maximum Electrical Current:** 9 Amps

**Material Thickness (T):** .0196

**Barrel ID (d1) :** .039

**Barrel OD (D):** .079

**Barrel Length (E):** .157



| HOFFMAN PART NO. | STUD SIZE | DIMENSIONS (INCHES) |                   |                     |             | UL | TAPE MOUNTED REEL QTY | DIE FOR TAPE MOUNTED | HAND TOOL |
|------------------|-----------|---------------------|-------------------|---------------------|-------------|----|-----------------------|----------------------|-----------|
|                  |           | STUD DIAMETER<br>d2 | TONGUE WIDTH<br>W | STUD CLEARANCE<br>F | LENGTH<br>L |    |                       |                      |           |
| 2622-2           | 2         | .087                | .197              | .236                | .157        | Y  | NA                    | NA                   | YHT2622   |
| 2622-3           | 4         | .126                | .197              | .236                | .157        | Y  | NA                    | NA                   | YHT2622   |
| 2622-M3          | 6         | .146                | .236              | .315                | .157        | Y  | NA                    | NA                   | YHT2622   |
| 2622-4           | 8         | .169                | .256              | .315                | .157        | Y  | NA                    | NA                   | YHT2622   |

### 2216 AWG Non-Insulated Ring

**Material:** Tin Plated Copper with Brazed Seam

**Maximum Electrical Current:** 18 Amps

**Material Thickness (T):** .030

**Barrel ID (d1):** .067

**Barrel OD (D):** .134

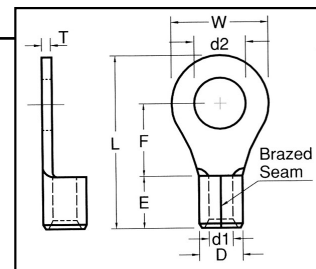
**Barrel Length (E):** .189

| HOFFMAN PART NO. | STUD SIZE | DIMENSIONS (INCHES) |                   |                     |             | UL | TAPE MOUNTED REEL QTY | DIE FOR TAPE MOUNTED | HAND TOOL  |
|------------------|-----------|---------------------|-------------------|---------------------|-------------|----|-----------------------|----------------------|------------|
|                  |           | STUD DIAMETER<br>d2 | TONGUE WIDTH<br>W | STUD CLEARANCE<br>F | LENGTH<br>L |    |                       |                      |            |
| 2216-S2/J        | 2         | .087                | .217              | .157                | .453        | Y  | 1000                  | 3H2216               | YHT2210    |
| 2216-S3          | 4         | .126                | .217              | .197                | .492        | Y  | 1000                  | 3H2216               | IZUMI 5N18 |
| 2216-S3/J        | 4         | .126                | .217              | .157                | .453        | Y  | 1000                  | 3H2216               | YHT2210    |
| 2216-M3          | 6         | .146                | .260              | .248                | .567        | Y  | 1000                  | 3H2216               | IZUMI 5N18 |
| 2216-M4          | 8         | .169                | .260              | .248                | .567        | Y  | 1000                  | 3H2216               | IZUMI 5N18 |
| 2216-4           | 8         | .169                | .315              | .276                | .622        | Y  | 1000                  | 3H2216               | IZUMI 5N18 |
| 2216-5           | 10        | .209                | .315              | .276                | .622        | Y  | 1000                  | 3H2216               | IZUMI 5N18 |
| 2216-6           | 1/4       | .252                | .457              | .433                | .858        | Y  | 1000                  | 3H2216               | IZUMI 5N18 |
| 2216-6/J         | 1/4       | .252                | .457              | .437                | .854        | Y  | 1000                  | 3H2216               | YHT2210    |
| 2216-8           | 5/16      | .331                | .457              | .433                | .858        | Y  | 1000                  | 3H2216               | IZUMI 5N18 |
| 2216-9           | 3/8       | .413                | .535              | .547                | 1.004       | Y  | 1000                  | 3H2216               | IZUMI 5N18 |
| 2216-13          | 1/2       | .512                | .756              | .630                | 1.197       | Y  | 1000                  | 3H2216               | IZUMI 5N18 |

## 1614 AWG Non-Insulated Ring

**Material:** Tin Plated Copper with Brazed Seam  
**Maximum Electrical Current:** 30 Amps  
**Material Thickness (T):** .031

**Barrel ID(d1):** .091  
**Barrel OD (D):** .161  
**Barrel Length (E):** .189



| HOFFMAN PART NO. | STUD SIZE | DIMENSIONS (INCHES) |                |                  |          | UL | TAPE MOUNTED REEL QTY | DIE FOR TAPE MOUNTED | HAND TOOL  |
|------------------|-----------|---------------------|----------------|------------------|----------|----|-----------------------|----------------------|------------|
|                  |           | STUD DIAMETER d2    | TONGUE WIDTH W | STUD CLEARANCE F | LENGTH L |    |                       |                      |            |
| 1614-3           | 4         | .126                | .260           | .189             | .504     | Y  | 1000                  | 3H1614               | IZUMI 5N18 |
| 1614-S3          | 6         | .146                | .260           | .189             | .504     | Y  | 1000                  | 3H1614               | IZUMI 5N18 |
| 1614-S3/J        | 6         | .146                | .252           | .169             | .484     | Y  | 1000                  | 3H1614               | YHT2210    |
| 1614-M3          | 6         | .146                | .260           | .248             | .567     | Y  | 1000                  | 3H1614               | IZUMI 5N18 |
| 1614-M4          | 8         | .169                | .260           | .248             | .567     | Y  | 1000                  | 3H1614               | IZUMI 5N18 |
| 1614-4           | 8         | .169                | .335           | .291             | .650     | Y  | 1000                  | 3H1614               | IZUMI 5N18 |
| 1614-M5          | 10        | .209                | .335           | .291             | .650     | Y  | 1000                  | 3H1614               | IZUMI 5N18 |
| 1614-5           | 10        | .209                | .374           | .291             | .669     | Y  | 1000                  | 3H1614               | IZUMI 5N18 |
| 1614-M5/J        | 10        | .209                | .335           | .307             | .661     | Y  | 1000                  | 3H1614               | YHT2210    |
| 1614-6           | 1/4       | .252                | .472           | .433             | .858     | Y  | 1000                  | 3H1614               | IZUMI 5N18 |
| 1614-8           | 5/16      | .331                | .472           | .433             | .858     | Y  | 1000                  | 3H1614               | IZUMI 5N18 |
| 1614-9           | 3/8       | .413                | .535           | .547             | 1.004    | Y  | 1000                  | 3H1614               | IZUMI 5N18 |
| 1614-9/J         | 3/8       | .413                | .535           | .547             | 1.004    | Y  | 1000                  | 3H1614               | YHT2210    |
| 1614-13          | 1/2       | .512                | .756           | .630             | 1.197    | Y  | 1000                  | 3H1614               | IZUMI 5N18 |

## 1210 AWG Non-Insulated Ring

**Material:** Tin Plated Copper with Brazed Seam  
**Maximum Electrical Current:** 50 Amps  
**Material Thickness (T):** .039

**Barrel ID(d1):** .134  
**Barrel OD (D):** .220  
**Barrel Length (E):** .236  
**Barrel Length for J Type:** .268

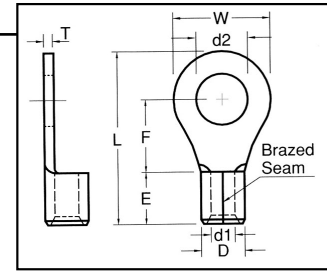
| HOFFMAN PART NO. | STUD SIZE | DIMENSIONS (INCHES) |                |                  |          | UL | MOUNTED REEL QTY | TAPE MOUNTED | DIE FOR HAND TOOL |
|------------------|-----------|---------------------|----------------|------------------|----------|----|------------------|--------------|-------------------|
|                  |           | STUD DIAMETER d2    | TONGUE WIDTH W | STUD CLEARANCE F | LENGTH L |    |                  |              |                   |
| 1210-S3/J        | 4         | .126                | .283           | .232             | .618     | Y  | 1000             | 3H1210       | YHT2210           |
| 1210-S3          | 6         | .146                | .283           | .240             | .618     | Y  | 1000             | 3H1210       | IZUMI 5N18        |
| 1210-S4          | 8         | .169                | .283           | .240             | .618     | Y  | 1000             | 3H1210       | IZUMI 5N18        |
| 1210S4/J         | 8         | .169                | .283           | .232             | .618     | Y  | 1000             | 3H1210       | YHT2210           |
| 1210-4           | 8         | .169                | .374           | .327             | .748     | Y  | 1000             | 3H1210       | IZUMI 5N18        |
| 1210-4/J         | 8         | .169                | .374           | .327             | .780     | Y  | 1000             | 3H1210       | YHT2210           |
| 1210-5           | 10        | .209                | .374           | .327             | .748     | Y  | 1000             | 3H1210       | IZUMI 5N18        |
| 1210-6           | 1/4       | .252                | .472           | .413             | .886     | Y  | 1000             | 3H1210       | IZUMI 5N18        |
| 1210-6/J         | 1/4       | .252                | .472           | .512             | 1.016    | Y  | 1000             | 3H1210       | YHT2210           |
| 1210-S6/J        | 1/4       | .252                | .520           | .354             | .882     | Y  | 1000             | 3H1210       | YHT2210           |
| 1210-S8/J        | 5/16      | .331                | .520           | .354             | .882     | Y  | 1000             | 3H1210       | YHT2210           |
| 1210-8           | 5/16      | .331                | .591           | .524             | 1.063    | Y  | 1000             | 3H1210       | IZUMI 5N18        |
| 1210-9           | 3/8       | .413                | .591           | .524             | 1.063    | Y  | 1000             | 3H1210       | IZUMI 5N18        |
| 1210-9/J         | 3/8       | .413                | .591           | .524             | 1.102    | Y  | 1000             | 3H1210       | YHT2210           |
| 1210-13          | 1/2       | .512                | .756           | .630             | 1.244    | Y  | 1000             | 3H1210       | IZUMI 5N18        |
| 1210-14          | 9/16      | .291                | 1.260          | .992             | 1.858    | Y  | 1000             | 3H1210       | IZUMI 5N18        |



## 8 AWG Non-Insulated Ring

**Material:** Tin Plated Copper with Brazed Seam  
**Maximum Electrical Current:** 70 Amps  
**Material Thickness (T):** .047

**Barrel ID(d1):** .177  
**Barrel OD (D):** .283  
**Barrel Length (E):** .335



| HOFFMAN PART NO. | STUD SIZE | DIMENSIONS (INCHES) |                   |                     |             | UL | TAPE MOUNTED REEL QTY | DIE FOR TAPE MOUNTED | HAND TOOL |
|------------------|-----------|---------------------|-------------------|---------------------|-------------|----|-----------------------|----------------------|-----------|
|                  |           | STUD DIAMETER<br>d2 | TONGUE WIDTH<br>W | STUD CLEARANCE<br>F | LENGTH<br>L |    |                       |                      |           |
| 8NK4R1           | 8         | .169                | .315              | .366                | .846        | Y  | NA                    | NA                   | AK150     |
| 8S4R1            | 8         | .169                | .472              | .366                | .937        | Y  | 200                   | 3H8                  |           |
| 8NK5R1           | 8         | .209                | .346              | .429                | .937        | Y  | NA                    | NA                   |           |
| 8S5R1            | 10        | .209                | .472              | .366                | .937        | Y  | 200                   | 3H8                  |           |
| 8S6R1            | 1/4       | .252                | .472              | .366                | .917        | Y  | 200                   | 3H8                  |           |
| 8L6R1            | 1/4       | .252                | .591              | .535                | 1.150       | Y  | 200                   | 3H8                  |           |
| 88R1             | 5/16      | .331                | .591              | .535                | 1.150       | Y  | 200                   | 3H8                  |           |
| 89R1             | 3/8       | .413                | .591              | .535                | 1.150       | Y  | 200                   | 3H8                  |           |
| 813R1            | 1/2       | .512                | .787              | .591                | 1.319       | Y  | 200                   | 3H8                  |           |

## 6 AWG Non-Insulated Ring

**Material:** Tin Plated Copper with Brazed Seam  
**Maximum Electrical Current:** 95 Amps  
**Material Thickness (T):** .059

**Barrel ID(d1):** .228  
**Barrel OD (D):** .354  
**Barrel Length (E):** .413

| HOFFMAN PART NO. | STUD SIZE | DIMENSIONS (INCHES) |                   |                     |             | UL | TAPE MOUNTED REEL QTY | DIE FOR TAPE MOUNTED | HAND TOOL |
|------------------|-----------|---------------------|-------------------|---------------------|-------------|----|-----------------------|----------------------|-----------|
|                  |           | STUD DIAMETER<br>d2 | TONGUE WIDTH<br>W | STUD CLEARANCE<br>F | LENGTH<br>L |    |                       |                      |           |
| 65R1             | 10        | .209                | .472              | .524                | 1.150       | Y  | 200                   | 3H6                  | AK150     |
| 66R1             | 1/4       | .252                | .472              | .524                | 1.150       | Y  | 200                   | 3H6                  |           |
| 68R1             | 5/16      | .331                | .630              | .559                | 1.280       | Y  | 200                   | 3H6                  |           |
| 69R1             | 3/8       | .413                | .630              | .559                | 1.280       | Y  | 200                   | 3H6                  |           |
| 613R1            | 1/2       | .512                | .866              | .780                | 1.614       | Y  | NA                    | 3H6                  |           |

## 4 AWG Non-Insulated Ring

**Material:** Tin Plated Copper with Brazed Seam  
**Maximum Electrical Current:** 125 Amps  
**Material Thickness (T):** .067

**Barrel ID(d1):** .303  
**Barrel OD (D):** .453  
**Barrel Length (E):** .472

| HOFFMAN PART NO. | STUD SIZE | DIMENSIONS (INCHES) |                   |                     |             | UL | TAPE MOUNTED REEL QTY | DIE FOR TAPE MOUNTED | HAND TOOL |
|------------------|-----------|---------------------|-------------------|---------------------|-------------|----|-----------------------|----------------------|-----------|
|                  |           | STUD DIAMETER<br>d2 | TONGUE WIDTH<br>W | STUD CLEARANCE<br>E | LENGTH<br>L |    |                       |                      |           |
| 4S5R1            | 10        | .209                | .480              | .594                | 1.307       | Y  | NA                    | NA                   | AK150     |
| 45R1             | 10        | .209                | .650              | .531                | 1.319       | Y  | NA                    | NA                   |           |
| 4S6R1            | 1/4       | .252                | .480              | .594                | 1.299       | Y  | NA                    | NA                   |           |
| 46R1             | 1/4       | .252                | .650              | .531                | 1.319       | Y  | NA                    | NA                   |           |
| 48R1             | 5/16      | .331                | .650              | .531                | 1.319       | Y  | NA                    | NA                   |           |
| 4S9R1            | 3/8       | .413                | .650              | .531                | 1.319       | Y  | NA                    | NA                   |           |
| 413R1            | 1/2       | .512                | .866              | .776                | 1.673       | Y  | NA                    | NA                   |           |



**2 AWG Non-Insulated Ring**

**Material:** Tin Plated Copper with Brazed Seam

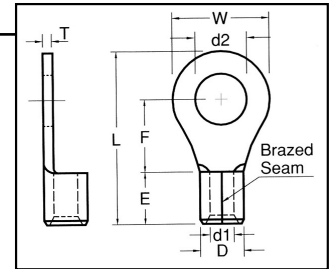
**Maximum Electrical Current:** 170 Amps

**Material Thickness (T):** .071

**Barrel ID(d1):** .370

**Barrel OD (D):** .524

**Barrel Length (E):** .551



| HOFFMAN PART NO. | STUD SIZE | DIMENSIONS (INCHES) |              |                |        | UL | TAPE MOUNTED REEL QTY | DIE FOR TAPE MOUNTED | HAND TOOL |
|------------------|-----------|---------------------|--------------|----------------|--------|----|-----------------------|----------------------|-----------|
|                  |           | STUD DIAMETER       | TONGUE WIDTH | STUD CLEARANCE | LENGTH |    |                       |                      |           |
|                  |           | d2                  | W            | F              | L      |    |                       |                      |           |
| 2S5R1            | 10        | .209                | .602         | .685           | 1.535  | Y  | NA                    | NA                   | AK150     |
| 2S6R1            | 1/4       | .252                | .602         | .685           | 1.535  | Y  | NA                    | NA                   |           |
| 2S8R1            | 5/16      | .331                | .602         | .685           | 1.535  | Y  | NA                    | NA                   |           |
| 2S9R1            | 3/8       | .413                | .602         | .685           | 1.535  | Y  | NA                    | NA                   |           |
| 29R1             | 3/8       | .413                | .866         | .697           | 1.681  | Y  | NA                    | NA                   |           |
| 211R1            | 7/16      | .453                | .866         | .697           | 1.681  | Y  | NA                    | NA                   |           |
| 213R1            | 1/2       | .512                | .866         | .697           | 1.681  | Y  | NA                    | NA                   |           |

**1/0 AWG Non-Insulated Ring**

**Material:** Tin Plated Copper with Brazed Seam

**Maximum Electrical Current:** 230 Amps

**Material Thickness (T):** .071

**Barrel ID(d1):** .449

**Barrel OD (D):** .606

**Barrel Length (E):** .709

| HOFFMAN PART NO. | STUD SIZE | DIMENSIONS (INCHES) |              |                |        | UL | TAPE MOUNTED REEL QTY | DIE FOR TAPE MOUNTED | HAND TOOL |
|------------------|-----------|---------------------|--------------|----------------|--------|----|-----------------------|----------------------|-----------|
|                  |           | STUD DIAMETER       | TONGUE WIDTH | STUD CLEARANCE | LENGTH |    |                       |                      |           |
|                  |           | d2                  | W            | F              | L      |    |                       |                      |           |
| 1/06R1           | 1/4       | .252                | .866         | .815           | 1.957  | Y  | NA                    | NA                   | AK150     |
| 1/08R1           | 5/16      | .331                | .866         | .815           | 1.957  | Y  | NA                    | NA                   |           |
| 1/09R1           | 3/8       | .413                | .866         | .815           | 1.957  | Y  | NA                    | NA                   |           |
| 1/011R1          | 7/16      | .453                | .866         | .815           | 1.957  | Y  | NA                    | NA                   |           |
| 1/013R1          | 1/2       | .512                | .866         | .815           | 1.957  | Y  | NA                    | NA                   |           |
| 1/016R1          | 5/8       | .669                | 1.260        | .925           | 2.264  | Y  | NA                    | NA                   |           |

**2/0 AWG Non-Insulated Ring**

**Material:** Tin Plated Copper with Brazed Seam

**Maximum Electrical Current:** 265 Amps

**Material Thickness:** .079

**Barrel ID(d1):** .524

**Barrel OD (D):** .689

**Barrel Length (E):** .709

| HOFFMAN PART NO. | STUD SIZE | DIMENSIONS (INCHES) |              |                |        | UL | TAPE MOUNTED REEL QTY | DIE FOR TAPE MOUNTED | HAND TOOL |
|------------------|-----------|---------------------|--------------|----------------|--------|----|-----------------------|----------------------|-----------|
|                  |           | STUD DIAMETER       | TONGUE WIDTH | STUD CLEARANCE | LENGTH |    |                       |                      |           |
|                  |           | d2                  | W            | F              | L      |    |                       |                      |           |
| 2/06R1           | 1/4       | .252                | .945         | .787           | 1.969  | Y  | NA                    | NA                   | AK150     |
| 2/08R1           | 5/16      | .331                | .945         | .787           | 1.969  | Y  | NA                    | NA                   |           |
| 2/09R1           | 3/8       | .413                | .945         | .787           | 1.969  | Y  | NA                    | NA                   |           |
| 2/011R1          | 7/16      | .453                | .945         | .787           | 1.969  | Y  | NA                    | NA                   |           |
| 2/013R1          | 1/2       | .512                | .945         | .787           | 1.969  | Y  | NA                    | NA                   |           |
| 2/016R1          | 5/8       | .669                | 1.260        | 1.024          | 2.402  | Y  | NA                    | NA                   |           |



## 3/0 AWG Non-Insulated Ring

**Material:** Tin Plated Copper with Brazed Seam

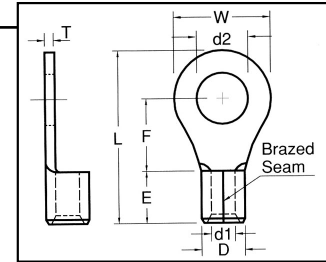
**Maximum Electrical Current:** 310 Amps

**Material Thickness (T):** .091

**Barrel ID(d1):** .571

**Barrel OD (D):** .768

**Barrel Length (E):** .787



| HOFFMAN PART NO. | STUD SIZE | DIMENSIONS (INCHES) |              |                |        | UL | TAPE MOUNTED REEL QTY | DIE FOR TAPE MOUNTED | HAND TOOL |
|------------------|-----------|---------------------|--------------|----------------|--------|----|-----------------------|----------------------|-----------|
|                  |           | STUD DIAMETER       | TONGUE WIDTH | STUD CLEARANCE | LENGTH |    |                       |                      |           |
|                  |           | d2                  | W            | F              | L      |    |                       |                      |           |
| 3/06R1           | 1/4       | .252                | 1.063        | .815           | 2.134  | Y  | NA                    | NA                   | AK150     |
| 3/08R1           | 5/16      | .331                | 1.063        | .815           | 2.134  | Y  | NA                    | NA                   |           |
| 3/09R1           | 3/8       | .413                | 1.063        | .815           | 2.134  | Y  | NA                    | NA                   |           |
| 3/011R1          | 7/16      | .453                | 1.063        | .815           | 2.134  | Y  | NA                    | NA                   |           |
| 3/013R1          | 1/2       | .512                | 1.063        | .815           | 2.134  | Y  | NA                    | NA                   |           |
| 3/016R1          | 5/8       | .669                | 1.260        | 1.260          | 2.677  | Y  | NA                    | NA                   |           |

## 4/0 AWG Non-Insulated Ring

**Material:** Tin Plated Copper with Brazed Seam

**Maximum Electrical Current:** 360 Amps

**Material Thickness (T):** .106

**Barrel ID(d1):** .646

**Barrel OD (D):** .870

**Barrel Length (E):** .827

| HOFFMAN PART NO. | STUD SIZE | DIMENSIONS (INCHES) |              |                |        | UL | TAPE MOUNTED REEL QTY | DIE FOR TAPE MOUNTED | HAND TOOL |
|------------------|-----------|---------------------|--------------|----------------|--------|----|-----------------------|----------------------|-----------|
|                  |           | STUD DIAMETER       | TONGUE WIDTH | STUD CLEARANCE | LENGTH |    |                       |                      |           |
|                  |           | d2                  | W            | F              | L      |    |                       |                      |           |
| 4/06R1           | 1/4       | .252                | 1.122        | .801           | 2.189  | Y  | NA                    | NA                   | AK150     |
| 4/08R1           | 5/16      | .331                | 1.122        | .801           | 2.189  | Y  | NA                    | NA                   |           |
| 4/09R1           | 3/8       | .413                | 1.122        | .801           | 2.189  | Y  | NA                    | NA                   |           |
| 4/011R1          | 7/16      | .453                | 1.122        | .801           | 2.189  | Y  | NA                    | NA                   |           |
| 4/013R1          | 1/2       | .512                | 1.122        | .801           | 2.189  | Y  | NA                    | NA                   |           |
| 4/016R1          | 5/8       | .669                | 1.260        | 1.260          | 2.717  | Y  | NA                    | NA                   |           |
| 4/019R1          | 3/4       | .827                | 1.260        | 1.260          | 2.717  | Y  | NA                    | NA                   |           |

## 250/300 MCM Non-Insulated Ring

**Material:** Tin Plated Copper with Brazed Seam

**Maximum Electrical Current:** 445 Amps

**Material Thickness (T):** .126

**Barrel ID(d1):** .768

**Barrel OD (D):** 1.047

**Barrel Length (E):** 1.063

| HOFFMAN PART NO. | STUD SIZE | DIMENSIONS (INCHES) |              |                |        | UL | TAPE MOUNTED REEL QTY | DIE FOR TAPE MOUNTED | HAND TOOL |
|------------------|-----------|---------------------|--------------|----------------|--------|----|-----------------------|----------------------|-----------|
|                  |           | STUD DIAMETER       | TONGUE WIDTH | STUD CLEARANCE | LENGTH |    |                       |                      |           |
|                  |           | d2                  | W            | F              | L      |    |                       |                      |           |
| 1508R1           | 5/16      | .331                | 1.417        | .906           | 2.599  | Y  | NA                    | NA                   | AK150     |
| 1509R1           | 3/8       | .413                | 1.417        | .906           | 2.599  | Y  | NA                    | NA                   |           |
| 15011R1          | 7/16      | .453                | 1.417        | .906           | 2.599  | Y  | NA                    | NA                   |           |
| 15013R1          | 1/2       | .512                | 1.417        | .906           | 2.599  | Y  | NA                    | NA                   |           |
| 15016R1          | 5/8       | .669                | 1.417        | .906           | 2.599  | Y  | NA                    | NA                   |           |



**300/350 MCM Non-Insulated Ring**

**Material:** Tin Plated Copper with Brazed Seam

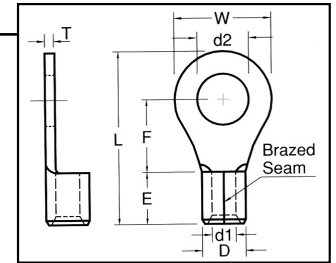
**Maximum Electrical Current:** 505 Amps

**Material Thickness (T):** .138

**Barrel ID(d1):** .827

**Barrel OD (D):** 1.126

**Barrel Length (E):** 1.122



| HOFFMAN PART NO. | STUD SIZE | DIMENSIONS (INCHES) |              |                |        | UL | TAPE MOUNTED REEL QTY | DIE FOR TAPE MOUNTED | *HYDRAULIC HEAD |
|------------------|-----------|---------------------|--------------|----------------|--------|----|-----------------------|----------------------|-----------------|
|                  |           | STUD DIAMETER       | TONGUE WIDTH | STUD CLEARANCE | LENGTH |    |                       |                      |                 |
|                  |           | d2                  | W            | F              | L      |    |                       |                      |                 |
| 2009R1           | 3/8       | .413                | 1.516        | .965           | 2.717  | Y  | NA                    | NA                   | 603             |
| 20011R1          | 7/16      | .453                | 1.516        | .965           | 2.717  | Y  | NA                    | NA                   |                 |
| 20013R1          | 1/2       | .512                | 1.516        | .965           | 2.717  | Y  | NA                    | NA                   |                 |
| 20016R1          | 5/8       | .669                | 1.516        | .965           | 2.717  | Y  | NA                    | NA                   |                 |
| 20019R1          | 3/4       | .827                | 1.516        | 1.535          | 3.409  | Y  | NA                    | NA                   |                 |

**400/500 MCM Non-Insulated Ring**

**Material:** Tin Plated Copper with Brazed Seam

**Maximum Electrical Current:** 620 Amps

**Material Thickness (T):** .157

**Barrel ID(d1):** .945

**Barrel OD (D):** 1.283

**Barrel Length (E):** 1.240

| HOFFMAN PART NO. | STUD SIZE | DIMENSIONS (INCHES) |              |                |        | UL | TAPE MOUNTED REEL QTY | DIE FOR TAPE MOUNTED | *HYDRAULIC HEAD |
|------------------|-----------|---------------------|--------------|----------------|--------|----|-----------------------|----------------------|-----------------|
|                  |           | STUD DIAMETER       | TONGUE WIDTH | STUD CLEARANCE | LENGTH |    |                       |                      |                 |
|                  |           | d2                  | W            | F              | L      |    |                       |                      |                 |
| 2509R1           | 3/8       | .413                | 1.732        | .965           | 2.835  | Y  | NA                    | NA                   | 603             |
| 25011R1          | 7/16      | .453                | 1.732        | .965           | 2.835  | Y  | NA                    | NA                   |                 |
| 25013R1          | 1/2       | .512                | 1.732        | .965           | 2.835  | Y  | NA                    | NA                   |                 |
| 25016R1          | 5/8       | .669                | 1.732        | .965           | 2.835  | Y  | NA                    | NA                   |                 |

**500/600MCM Non-Insulated Ring**

**Material:** Tin Plated Copper with Brazed Seam

**Maximum Electrical Current:** 690 Amps

**Material Thickness (T):** .169

**Barrel ID:** 1.102

**Barrel OD:** 1.480

**Barrel Length:** 1.398

| HOFFMAN PART NO. | STUD SIZE | DIMENSIONS (INCHES) |              |                |        | UL | TAPE MOUNTED REEL QTY | DIE FOR TAPE MOUNTED | *HYDRAULIC HEAD |
|------------------|-----------|---------------------|--------------|----------------|--------|----|-----------------------|----------------------|-----------------|
|                  |           | STUD DIAMETER       | TONGUE WIDTH | STUD CLEARANCE | LENGTH |    |                       |                      |                 |
|                  |           | d2                  | W            | F              | L      |    |                       |                      |                 |
| 3009R1           | 3/8       | .413                | 1.988        | 1.319          | 3.465  | Y  | NA                    | NA                   | 603             |
| 30011R1          | 7/16      | .453                | 1.988        | 1.319          | 3.465  | Y  | NA                    | NA                   |                 |
| 30013R1          | 1/2       | .512                | 1.988        | 1.319          | 3.465  | Y  | NA                    | NA                   |                 |
| 30016R1          | 5/8       | .669                | 1.988        | 1.319          | 3.465  | Y  | NA                    | NA                   |                 |

\* Refer to Tool Selector Chart ([page 92-93](#)) for Tool Die Numbers.

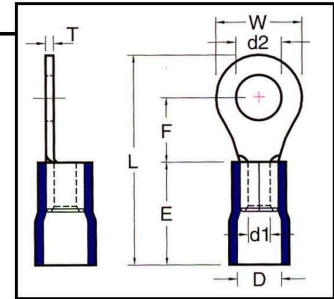


## Vinyl Insulated Ring Terminals

### 2216 AWG Vinyl Insulated Ring

**Material:** Tin Plated Copper with Butted Seam  
**Insulation Material:** Red PVC Vinyl with Funnel Entry  
**Maximum Electrical Current:** 18 Amps  
**Maximum Electrical Rating:** 75°C, 600V  
**Material Thickness (T):** .030

**Barrel ID(d1):** .067  
**Barrel OD (D):** .157  
**Barrel Length (E):** .441



| HOFFMAN<br>PART NO. | STUD<br>SIZE | DIMENSIONS (INCHES)    |                      |                        |             | UL | TAPE<br>MOUNTED<br>REEL QTY | DIE FOR<br>TAPE<br>MOUNTED | HAND TOOL |
|---------------------|--------------|------------------------|----------------------|------------------------|-------------|----|-----------------------------|----------------------------|-----------|
|                     |              | STUD<br>DIAMETER<br>d2 | TONGUE<br>WIDTH<br>W | STUD<br>CLEARANCE<br>F | LENGTH<br>L |    |                             |                            |           |
| FVL2216-S2/J        | 2            | .087                   | .217                 | .157                   | .689        | Y  | 1000                        | 3V2216                     | YNT2216   |
| FVL2216-S3R2/J      | 4            | .126                   | .217                 | .157                   | .689        | Y  | 1000                        | 3V2216                     | YNT2216   |
| FVL2216-M3R2        | 6            | .146                   | .260                 | .248                   | .811        | Y  | 1000                        | 3V2216                     | YNM2210   |
| FVL2216-M4R2        | 8            | .169                   | .260                 | .248                   | .811        | Y  | 1000                        | 3V2216                     | YNM2210   |
| FVL2216-4R2         | 8            | .169                   | .315                 | .276                   | .866        | Y  | 1000                        | 3V2216                     | YNM2210   |
| FVL2216-5R2         | 10           | .209                   | .315                 | .276                   | .866        | Y  | 1000                        | 3V2216                     | YNM2210   |
| FVL2216-6R2         | 1/4          | .252                   | .457                 | .433                   | 1.102       | Y  | 1000                        | 3V2216                     | YNM2210   |
| FVL2216-8R2         | 5/16         | .331                   | .457                 | .433                   | 1.102       | Y  | 1000                        | 3V2216                     | YNM2210   |
| FVL2216-9R2         | 3/8          | .413                   | .535                 | .547                   | 1.248       | Y  | 1000                        | 3V2216                     | YNM2210   |
| FVL2216-9R2/J       | 3/8          | .413                   | .535                 | .547                   | 1.240       | Y  | 1000                        | 3V2216                     | YNT2216   |

### 1614 AWG Vinyl Insulated Ring

**Material:** Tin Plated Copper with Butted Seam  
**Insulation Material:** Blue PVC Vinyl with Funnel Entry  
**Maximum Electrical Current:** 30 Amps  
**Maximum Electrical Rating:** 75°C, 600V  
**Material Thickness (T):** .031

**Barrel ID:** .091  
**Barrel OD:** .177  
**Barrel Length:** .453

| HOFFMAN<br>PART NO. | STUD<br>SIZE | DIMENSIONS (INCHES)    |                      |                        |             | UL | TAPE<br>MOUNTED<br>REEL QTY | DIE FOR<br>TAPE<br>MOUNTED | HAND TOOL |
|---------------------|--------------|------------------------|----------------------|------------------------|-------------|----|-----------------------------|----------------------------|-----------|
|                     |              | STUD<br>DIAMETER<br>d2 | TONGUE<br>WIDTH<br>W | STUD<br>CLEARANCE<br>F | LENGTH<br>L |    |                             |                            |           |
| FVL1614-3R2         | 4            | .126                   | .260                 | .189                   | .760        | Y  | 1000                        | 3V1614                     | YNM2210   |
| FVL1614S3R2         | 6            | .146                   | .260                 | .189                   | .760        | Y  | 1000                        | 3V1614                     | YNM2210   |
| FVL1614-M3R2        | 6            | .146                   | .260                 | .248                   | .823        | Y  | 1000                        | 3V1614                     | YNM2210   |
| FVL1614-M4R2        | 8            | .169                   | .260                 | .248                   | .823        | Y  | 1000                        | 3V1614                     | YNM2210   |
| FVL1614-4R2         | 8            | .169                   | .335                 | .307                   | .917        | Y  | 1000                        | 3V1614                     | YNM2210   |
| FVL1614-M5R2        | 10           | .209                   | .335                 | .307                   | .917        | Y  | 1000                        | 3V1614                     | YNM2210   |
| FVL1614-5R2         | 10           | .209                   | .374                 | .287                   | .917        | Y  | 1000                        | 3V1614                     | YNM2210   |
| FVL1614-6R2         | 1/4          | .252                   | .472                 | .433                   | 1.114       | Y  | 1000                        | 3V1614                     | YNM2210   |
| FVL1614-8R2         | 5/16         | .331                   | .472                 | .433                   | 1.114       | Y  | 1000                        | 3V1614                     | YNM2210   |
| FVL1614-9R2         | 3/8          | .413                   | .535                 | .547                   | 1.260       | Y  | 1000                        | 3V1614                     | YNM2210   |
| FVL1614-13R2        | 1/2          | .512                   | .756                 | .630                   | 1.453       | Y  | N/A                         | N/A                        | YNM2210   |

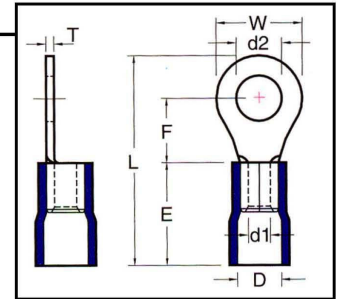




### 1210 AWG Vinyl Insulated Ring

**Material:** Tin Plated Copper with Butted Seam  
**Insulation Material:** Yellow PVC Vinyl with Funnel Entry  
**Maximum Electrical Current:** 50 Amps  
**Maximum Electrical Rating:** 75°C, 600V  
**Material Thickness (T):** .039

**Barrel ID (d1):** .134  
**Barrel OD (D):** .248     **J Type:** .276  
**Barrel Length (E):** .555     **J Type:** .551



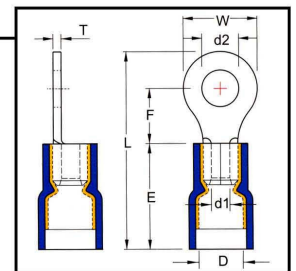
| HOFFMAN PART NO. | STUD SIZE | DIMENSIONS (INCHES) |                   |                     |             | UL | TAPE MOUNTED REEL QTY | DIE FOR TAPE MOUNTED | HAND TOOL |
|------------------|-----------|---------------------|-------------------|---------------------|-------------|----|-----------------------|----------------------|-----------|
|                  |           | STUD DIAMETER<br>d2 | TONGUE WIDTH<br>W | STUD CLEARANCE<br>F | LENGTH<br>L |    |                       |                      |           |
| FVL1210-3R2/J    | 4         | .126                | .374              | .327                | 1.063       | Y  | 500                   | 3V1210               | YNT1210S  |
| FVL1210-S3R2     | 6         | .146                | .283              | .240                | .937        | Y  | 500                   | 3V1210               | YNM2210   |
| FVL1210-S3/J     | 6         | .146                | .283              | .232                | .925        | Y  | 500                   | 3V1210               | YNT1210S  |
| FVL1210-S4R2     | 8         | .169                | .283              | .240                | .937        | Y  | 500                   | 3V1210               | YNM2210   |
| FVL1210-4/J      | 8         | .169                | .374              | .327                | 1.063       | Y  | 500                   | 3V1210               | YNT1210S  |
| FVL1210-4R2      | 8         | .169                | .374              | .358                | 1.091       | Y  | 500                   | 3V1210               | YNM2210   |
| FVL1210-5R2/J    | 10        | .209                | .374              | .327                | 1.063       | Y  | 500                   | 3V1210               | YNT1210S  |
| FVL1210-5R2      | 10        | .209                | .374              | .327                | 1.067       | Y  | 500                   | 3V1210               | YNM2210   |
| FVL1210-S6R2/J   | 1/4       | .252                | .520              | .354                | 1.165       | Y  | 500                   | 3V1210               | YNT1210S  |
| FVL1210-6R2/J    | 1/4       | .252                | .472              | .512                | 1.299       | Y  | 500                   | 3V1210               | YNT1210S  |
| FVL1210-6R2      | 1/4       | .252                | .472              | .413                | 1.205       | Y  | 500                   | 3V1210               | YNM2210   |
| FVL1210-S8R2/J   | 5/16      | .331                | .520              | .354                | 1.165       | Y  | 500                   | 3V1210               | YNT1210S  |
| FVL1210-8R2      | 5/16      | .331                | .591              | .524                | 1.382       | Y  | 500                   | 3V1210               | YNM2210   |
| FVL1210-9R2      | 3/8       | .413                | .591              | .524                | 1.382       | Y  | 500                   | 3V1210               | YNM2210   |
| FVL1210-9/J      | 3/8       | .413                | .591              | .539                | 1.386       | Y  | 500                   | 3V1210               | YNT1210S  |
| FVL1210-13       | 1/2       | .512                | .756              | .630                | 1.563       | Y  | NA                    | NA                   | YNM2210   |

## Vinyl Insulated Ring Terminals with Copper Support Sleeve

### 2216 AWG Vinyl Insulated Ring with Copper Support Sleeve

**Material:** Tin Plated Copper with Butted Seam  
**Insulation Material:** Red PVC Vinyl with Funnel Entry Copper Support Sleeve  
**Maximum Electrical Current:** 18 Amps  
**Maximum Electrical Rating:** 75°C, 600V  
**Material Thickness (T):** .030

**Barrel ID (d1):** .067  
**Barrel OD (D):** .065  
**Barrel Length (E):** .413



| HOFFMAN PART NO. | STUD SIZE | DIMENSIONS (INCHES) |                   |                     |             | UL | TAPE MOUNTED REEL QTY | DIE FOR TAPE MOUNTED | HAND TOOL |
|------------------|-----------|---------------------|-------------------|---------------------|-------------|----|-----------------------|----------------------|-----------|
|                  |           | STUD DIAMETER<br>d2 | TONGUE WIDTH<br>W | STUD CLEARANCE<br>F | LENGTH<br>L |    |                       |                      |           |
| FVD2216-S3       | 4         | .126                | .217              | .197                | .709        | Y  | 1000                  | 3V2216               | YNM2210D  |
| FVD2216-M3       | 6         | .146                | .260              | .248                | .783        | Y  | 1000                  | 3V2216               | YNM2210D  |
| FVD2216-M4       | 8         | .169                | .260              | .248                | .783        | Y  | 1000                  | 3V2216               | YNM2210D  |
| FVD2216-4        | 8         | .169                | .315              | .276                | .839        | Y  | 1000                  | 3V2216               | YNM2210D  |
| FVD2216-5        | 10        | .209                | .315              | .276                | .839        | Y  | 1000                  | 3V2216               | YNM2210D  |
| FVD2216-6        | 1/4       | .252                | .457              | .433                | 1.075       | Y  | 1000                  | 3V2216               | YNM2210D  |
| FVD2216-8        | 5/16      | .331                | .457              | .433                | 1.075       | Y  | 1000                  | 3V2216               | YNM2210D  |
| FVD2216-9        | 3/8       | .413                | .535              | .547                | 1.220       | Y  | 1000                  | 3V2216               | YNM2210D  |



## 1614 AWG Vinyl Insulated Ring with Copper Support Sleeve

**Material:** Tin Plated Copper with Butted Seam

**Insulation Material:** Blue PVC Vinyl with Funnel Entry Copper Support Sleeve

**Maximum Electrical Current:** 30 Amps

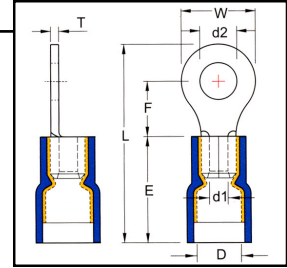
**Barrel ID (d1):** .091

**Maximum Electrical Rating:** 75°C, 600V

**Barrel OD (D):** .197

**Material Thickness (T):** .031

**Barrel Length (E):** .413



| HOFFMAN<br>PART NO. | STUD<br>SIZE | DIMENSIONS (INCHES) |                 |                   |        | UL | TAPE<br>MOUNTED<br>REEL QTY | DIE FOR<br>TAPE<br>MOUNTED | HAND TOOL |
|---------------------|--------------|---------------------|-----------------|-------------------|--------|----|-----------------------------|----------------------------|-----------|
|                     |              | STUD<br>DIAMETER    | TONGUE<br>WIDTH | STUD<br>CLEARANCE | LENGTH |    |                             |                            |           |
|                     |              | d2                  | W               | F                 | L      |    |                             |                            |           |
| FVD1614-3           | 4            | .126                | .260            | .165              | .720   | Y  | 1000                        | 3V1614                     | YNM2210D  |
| FVD1614-M3          | 6            | .146                | .260            | .248              | .783   | Y  | 1000                        | 3V1614                     | YNM2210D  |
| FVD1614-M4          | 8            | .169                | .260            | .248              | .783   | Y  | 1000                        | 3V1614                     | YNM2210D  |
| FVD1614-4           | 8            | .169                | .335            | .307              | .878   | Y  | 1000                        | 3V1614                     | YNM2210D  |
| FVD1614-M5          | 10           | .209                | .335            | .307              | .878   | Y  | 1000                        | 3V1614                     | YNM2210D  |
| FVD1614-5           | 10           | .209                | .374            | .287              | .878   | Y  | 1000                        | 3V1614                     | YNM2210D  |
| FVD1614-6           | 1/4          | .252                | .472            | .433              | 1.075  | Y  | 1000                        | 3V1614                     | YNM2210D  |
| FVD1614-8           | 5/16         | .331                | .472            | .433              | 1.075  | Y  | 1000                        | 3V1614                     | YNM2210D  |
| FVD1614-9           | 3/8          | .413                | .535            | .547              | 1.220  | Y  | 1000                        | 3V1614                     | YNM2210D  |
| FVD1614-13          | 1/2          | .512                | .756            | .630              | 1.413  | Y  | 1000                        | 3V1614                     | YNM2210D  |

## 1210 AWG Vinyl Insulated Ring with Copper Support Sleeve

**Material:** Tin Plated Copper with Butted Seam

**Insulation Material:** Yellow PVC Vinyl with Funnel Entry Copper Support Sleeve

**Maximum Electrical Current:** 50 Amps

**Barrel ID (d1):** .134

**Maximum Electrical Rating:** 75°C, 600V

**Barrel OD (D):** .268

**Material Thickness (T):** .039

**Barrel Length (E):** .531 J Type: .551

| HOFFMAN<br>PART NO. | STUD<br>SIZE | DIMENSIONS (INCHES) |                 |                   |        | UL | TAPE<br>MOUNTED<br>REEL QTY | DIE FOR<br>TAPE<br>MOUNTED | HAND TOOL |
|---------------------|--------------|---------------------|-----------------|-------------------|--------|----|-----------------------------|----------------------------|-----------|
|                     |              | STUD<br>DIAMETER    | TONGUE<br>WIDTH | STUD<br>CLEARANCE | LENGTH |    |                             |                            |           |
|                     |              | d2                  | W               | F                 | L      |    |                             |                            |           |
| FVD1210-S3          | 6            | .146                | .283            | .240              | .913   | Y  | 500                         | 3V1210                     | YNM2210D  |
| FVD1210-3/J         | 4            | .126                | .374            | .327              | 1.063  | Y  | 500                         | 3V1210                     | YNT1210S  |
| FVD1210-4/J         | 8            | .169                | .374            | .327              | 1.063  | Y  | 500                         | 3V1210                     | YNT1210S  |
| FVD1210-S4          | 8            | .169                | .283            | .240              | .913   | Y  | 500                         | 3V1210                     | YNM2210D  |
| FVD1210-4           | 8            | .169                | .374            | .358              | 1.067  | Y  | 500                         | 3V1210                     | YNM2210D  |
| FVD1210-5           | 10           | .209                | .374            | .358              | 1.067  | Y  | 500                         | 3V1210                     | YNM2210D  |
| FVD1210-6/J         | 1/4          | .252                | .472            | .512              | 1.229  | Y  | 500                         | 3V1210                     | YNT1210S  |
| FVD1210-S6/J        | 1/4          | .252                | .520            | .354              | 1.165  | Y  | 500                         | 3V1210                     | YNT1210S  |
| FVD1210-6           | 1/4          | .252                | .472            | .413              | 1.181  | Y  | 500                         | 3V1210                     | YNM2210D  |
| FVD1210-8           | 5/16         | .331                | .591            | .531              | 1.358  | Y  | 500                         | 3V1210                     | YNM2210D  |
| FVD1210-9           | 3/8          | .413                | .591            | .531              | 1.358  | Y  | 500                         | 3V1210                     | YNM2210D  |
| FVD1210-13          | 1/2          | .512                | .756            | .630              | 1.539  | Y  | NA                          | NA                         | YNM2210D  |



## Nylon Insulated Ring Terminals with Support Sleeve

### 2622 AWG Nylon Insulated Ring with Copper Support Sleeve

**Material:** Tin Plated Copper with Butted Seam

**Insulation Material:** Yellow 6/6 Nylon with Funnel Entry Copper Support Sleeve

**Maximum Electrical Current:** 9 Amps

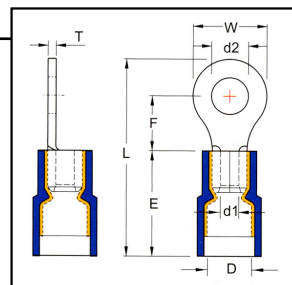
**Maximum Electrical Rating:** 75°C, 600V

**Material Thickness (T):** .0197

**Barrel ID (d1):** .039

**Barrel OD (D):** .098

**Barrel Length (E):** .327



| HOFFMAN PART NO. | STUD SIZE | DIMENSIONS (INCHES) |                   |                     |             | UL | TAPE MOUNTED REEL QTY | DIE FOR TAPE MOUNTED | HAND TOOL |
|------------------|-----------|---------------------|-------------------|---------------------|-------------|----|-----------------------|----------------------|-----------|
|                  |           | STUD DIAMETER<br>d2 | TONGUE WIDTH<br>W | STUD CLEARANCE<br>F | LENGTH<br>L |    |                       |                      |           |
| FND2622-2/J      | 2         | .126                | .205              | .228                | .657        | Y  | NA                    | NA                   | YNT2622   |
| FND2622-3.7/J    | 4         | .126                | .205              | .228                | .657        | Y  | NA                    | NA                   | YNT2622   |
| FND2622-M3/J     | 6         | .146                | .205              | .228                | .657        | Y  | NA                    | NA                   | YNT2622   |
| FND2622-4/J      | 8         | .169                | .260              | .303                | .760        | Y  | NA                    | NA                   | YNT2622   |

### 2216 AWG Nylon Insulated Ring with Copper Support Sleeve

**Material:** Tin Plated Copper with Butted Seam

**Insulation Material:** Red 6/6 Nylon with Funnel Entry Copper Support Sleeve

**Maximum Electrical Current:** 18 Amps

**Maximum Electrical Rating:** 105°C, 600V

**Material Thickness (T):** .030

**Barrel ID (d1):** .067

**Barrel OD (D):** .177

**Barrel Length (E):** .433

| HOFFMAN PART NO. | STUD SIZE | DIMENSIONS (INCHES) |                   |                     |             | UL | TAPE MOUNTED REEL QTY | DIE FOR TAPE MOUNTED | HAND TOOL |
|------------------|-----------|---------------------|-------------------|---------------------|-------------|----|-----------------------|----------------------|-----------|
|                  |           | STUD DIAMETER<br>d2 | TONGUE WIDTH<br>W | STUD CLEARANCE<br>F | LENGTH<br>L |    |                       |                      |           |
| FND2216-S3       | 4         | .126                | .217              | .197                | .728        | Y  | 1000                  | 3V2216               | YNM2210D  |
| FND2216-M3       | 6         | .146                | .260              | .248                | .803        | Y  | 1000                  | 3V2216               | YNM2210D  |
| FND2216M4        | 8         | .169                | .260              | .248                | .803        | Y  | 1000                  | 3V2216               | YNM2210D  |
| FND2216-4        | 8         | .169                | .315              | .276                | .858        | Y  | 1000                  | 3V2216               | YNM2210D  |
| FND2216-5        | 10        | .209                | .315              | .276                | .858        | Y  | 1000                  | 3V2216               | YNM2210D  |
| FND2216-6        | 1/4       | .252                | .457              | .433                | 1.094       | Y  | 1000                  | 3V2216               | YNM2210D  |
| FND2216-8        | 5/16      | .331                | .457              | .433                | 1.094       | Y  | 1000                  | 3V2216               | YNM2210D  |
| FND2216-9        | 3/8       | .413                | .535              | .547                | 1.240       | Y  | 1000                  | 3V2216               | YNM2210D  |



## 1614 AWG Nylon Insulated Ring with Copper Support Sleeve

**Material:** Tin Plated Copper with Butted Seam

**Insulation Material:** Blue 6/6 Nylon with Funnel Entry Copper Support Sleeve

**Maximum Electrical Current:** 30 Amps

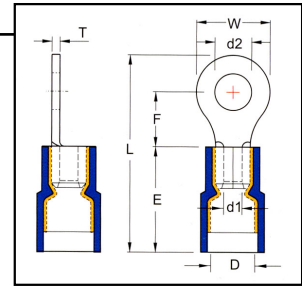
**Barrel ID (d1):** .091

**Maximum Electrical Rating:** 105°C, 600V

**Barrel OD (D):** .205

**Material Thickness (T):** .031

**Barrel Length (E):** .433



| HOFFMAN PART NO. | STUD SIZE | DIMENSIONS (INCHES) |                   |                     |             | UL | TAPE MOUNTED REEL QTY | DIE FOR TAPE MOUNTED | HAND TOOL |
|------------------|-----------|---------------------|-------------------|---------------------|-------------|----|-----------------------|----------------------|-----------|
|                  |           | STUD DIAMETER<br>d2 | TONGUE WIDTH<br>W | STUD CLEARANCE<br>F | LENGTH<br>L |    |                       |                      |           |
| FND1614-3        | 4         | .126                | .260              | .189                | .740        | Y  | 1000                  | 3V1614               | YNM2210D  |
| FND1614-M3       | 6         | .146                | .260              | .248                | .803        | Y  | 1000                  | 3V1614               | YNM2210D  |
| FND1614-M4       | 8         | .169                | .260              | .248                | .803        | Y  | 1000                  | 3V1614               | YNM2210D  |
| FND1614-4        | 8         | .169                | .335              | .307                | .898        | Y  | 1000                  | 3V1614               | YNM2210D  |
| FND1614-M5       | 10        | .209                | .335              | .307                | .898        | Y  | 1000                  | 3V1614               | YNM2210D  |
| FND1614-5        | 10        | .209                | .374              | .287                | .898        | Y  | 1000                  | 3V1614               | YNM2210D  |
| FND1614-6        | 1/4       | .252                | .472              | .433                | 1.094       | Y  | 1000                  | 3V1614               | YNM2210D  |
| FND1614-8        | 5/16      | .331                | .472              | .433                | 1.094       | Y  | 1000                  | 3V1614               | YNM2210D  |
| FND1614-9        | 3/8       | .413                | .535              | .547                | 1.240       | Y  | 1000                  | 3V1614               | YNM2210D  |
| FND1614-13       | 1/2       | .512                | .756              | .630                | 1.433       | Y  | 1000                  | 3V1614               | YNM2210D  |

## 1210 AWG Nylon Insulated Ring with Copper Support Sleeve

**Material:** Tin Plated Copper with Butted Seam

**Insulation Material:** Yellow 6/6 Nylon with Funnel Entry Copper Support Sleeve

**Maximum Electrical Current:** 50 Amps

**Barrel ID(d1):** .134

**Maximum Electrical Rating:** 105°C, 600 V

**Barrel OD (D):** .276

**Material Thickness (T):** .039

**Barrel Length (E):** .512

| HOFFMAN PART NO. | STUD SIZE | DIMENSIONS (INCHES) |                   |                     |             | UL | TAPE MOUNTED REEL QTY | DIE FOR TAPE MOUNTED | HAND TOOL |
|------------------|-----------|---------------------|-------------------|---------------------|-------------|----|-----------------------|----------------------|-----------|
|                  |           | STUD DIAMETER<br>d2 | TONGUE WIDTH<br>W | STUD CLEARANCE<br>F | LENGTH<br>L |    |                       |                      |           |
| FND1210-S3       | 6         | .146                | .283              | .240                | .894        | Y  | 1000                  | 3V1210               | YNM2210D  |
| FND1210-S4       | 8         | .169                | .283              | .240                | .894        | Y  | 1000                  | 3V1210               | YNM2210D  |
| FND1210-4        | 8         | .169                | .374              | .327                | 1.024       | Y  | 1000                  | 3V1210               | YNM2210D  |
| FND1210-5        | 10        | .209                | .374              | .327                | 1.024       | Y  | 1000                  | 3V1210               | YNM2210D  |
| FND1210-S6       | 1/4       | .252                | .520              | .354                | 1.146       | Y  | 1000                  | 3V1210               | YNM2210D  |
| FND1210-6        | 1/4       | .252                | .472              | .413                | 1.161       | Y  | 1000                  | 3V1210               | YNM2210D  |
| FND1210-8        | 5/16      | .331                | .591              | .531                | 1.339       | Y  | 1000                  | 3V1210               | YNM2210D  |
| FND1210-9        | 3/8       | .413                | .591              | .531                | 1.339       | Y  | 500                   | 3V1210               | YNM2210D  |
| FND1210-13       | 1/2       | .512                | .756              | .630                | 1.520       | Y  | NA                    | NA                   | YNM2210D  |



# Nylon Insulated Ring Terminals

## 8 AWG Nylon Insulated Ring

**Material:** Tin Plated Copper with Butted Seam

**Insulation Material:** Red 6/6 Nylon

**Maximum Electrical Current:** 70 Amps

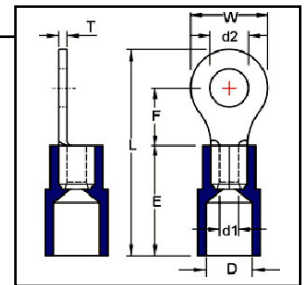
**Maximum Electrical Rating:** 105°C, 600V

**Material Thickness (T):** .047

**Barrel ID(d1):** .177

**Barrel OD (D):** .315

**Barrel Length (E):** .630



| HOFFMAN PART NO. | STUD SIZE | DIMENSIONS (INCHES) |              |                |        | UL | TAPE MOUNTED REEL QTY | DIE FOR TAPE MOUNTED | HAND TOOL |
|------------------|-----------|---------------------|--------------|----------------|--------|----|-----------------------|----------------------|-----------|
|                  |           | STUD DIAMETER       | TONGUE WIDTH | STUD CLEARANCE | LENGTH |    |                       |                      |           |
|                  |           | d2                  | W            | F              | L      |    |                       |                      |           |
| FN8S4            | 8         | .169                | .315         | .366           | 1.142  | Y  | 250                   | 3H6                  | 111       |
| FN8S5            | 10        | .209                | .472         | .366           | 1.232  | Y  | 250                   | 3H6                  | 111       |
| FN8S6            | 1/4       | .252                | .472         | .366           | 1.232  | Y  | 250                   | 3H6                  | 111       |
| FN8-6            | 1/4       | .252                | .591         | .543           | 1.469  | Y  | 250                   | 3H6                  | 111       |
| FN8-8            | 5/16      | .331                | .591         | .543           | 1.469  | Y  | 250                   | 3H6                  | 111       |
| FN8-9            | 3/8       | .413                | .591         | .543           | 1.469  | Y  | NA                    | NA                   | 111       |
| FN8-13           | 1/2       | .512                | .787         | .591           | 1.614  | Y  | NA                    | NA                   | 111       |

## 6 AWG Nylon Insulated Ring

**Material:** Tin Plated Copper with Butted Seam

**Insulation Material:** Blue 6/6 Nylon

**Maximum Electrical Current:** 95 Amps

**Maximum Electrical Rating:** 105°C, 600V

**Material Thickness (T):** .059

**Barrel ID(d1):** .228

**Barrel OD (D):** .433

**Barrel Length (E):** .846

| HOFFMAN PART NO. | STUD SIZE | DIMENSIONS (INCHES) |              |                |        | UL | TAPE MOUNTED REEL QTY | DIE FOR TAPE MOUNTED | HAND TOOL |
|------------------|-----------|---------------------|--------------|----------------|--------|----|-----------------------|----------------------|-----------|
|                  |           | STUD DIAMETER       | TONGUE WIDTH | STUD CLEARANCE | LENGTH |    |                       |                      |           |
|                  |           | d2                  | W            | F              | L      |    |                       |                      |           |
| FN65             | 10        | .209                | .472         | .524           | 1.606  | Y  | NA                    | NA                   | 111       |
| FN66             | 1/4       | .252                | .472         | .524           | 1.606  | Y  | NA                    | NA                   | 111       |
| FN68             | 5/16      | .331                | .630         | .559           | 1.713  | Y  | NA                    | NA                   | 111       |
| FN69             | 3/8       | .413                | .630         | .559           | 1.713  | Y  | NA                    | NA                   | 111       |
| FN6-13           | 1/2       | .512                | .866         | .780           | 2.047  | Y  | NA                    | NA                   | 111       |



## 4 AWG Nylon Insulated Ring

**Material:** Tin Plated Copper with Butted Seam

**Insulation Material:** Yellow 6/6 Nylon

**Maximum Electrical Current:** 125 Amps

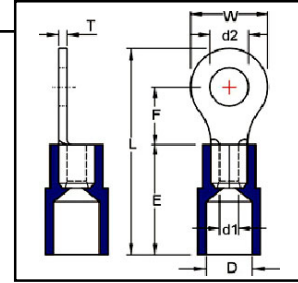
**Maximum Electrical Rating:** 105°C, 600V

**Material Thickness (T):** .067

**Barrel ID(d1):** .303

**Barrel OD (D):** .512

**Barrel Length (E):** .945



| HOFFMAN<br>PART NO. | STUD<br>SIZE | DIMENSIONS (INCHES) |                 |                   |        | UL | TAPE<br>MOUNTED<br>REEL QTY | DIE FOR<br>TAPE<br>MOUNTED | HAND TOOL |
|---------------------|--------------|---------------------|-----------------|-------------------|--------|----|-----------------------------|----------------------------|-----------|
|                     |              | STUD<br>DIAMETER    | TONGUE<br>WIDTH | STUD<br>CLEARANCE | LENGTH |    |                             |                            |           |
|                     |              | d2                  | W               | F                 | L      |    |                             |                            |           |
| FN4S5               | 10           | .209                | .480            | .594              | 1.780  | Y  | NA                          | NA                         | 111       |
| FN46                | 1/4          | .252                | .650            | .531              | 1.791  | Y  | NA                          | NA                         | 111       |
| FN48                | 5/16         | .331                | .650            | .531              | 1.791  | Y  | NA                          | NA                         | 111       |
| FN49                | 3/8          | .413                | .650            | .531              | 1.791  | Y  | NA                          | NA                         | 111       |
| FN413               | 1/2          | .453                | .866            | .776              | 2.146  | Y  | NA                          | NA                         | 111       |

## 2 AWG Nylon Insulated Ring

**Material:** Tin Plated Copper with Butted Seam

**Insulation Material:** Red 6/6 Nylon

**Maximum Electrical Current:** 170 Amps

**Maximum Electrical Rating:** 105°C, 600V

**Material Thickness (T):** .071

**Barrel ID(d1):** .370

**Barrel OD (D):** .571

**Barrel Length (E):** 1.063

| HOFFMAN<br>PART NO. | STUD<br>SIZE | DIMENSIONS (INCHES) |                 |                   |        | UL | TAPE<br>MOUNTED<br>REEL QTY | DIE FOR<br>TAPE<br>MOUNTED | HAND TOOL |
|---------------------|--------------|---------------------|-----------------|-------------------|--------|----|-----------------------------|----------------------------|-----------|
|                     |              | STUD<br>DIAMETER    | TONGUE<br>WIDTH | STUD<br>CLEARANCE | LENGTH |    |                             |                            |           |
|                     |              | d2                  | W               | F                 | L      |    |                             |                            |           |
| FN2S5               | 10           | .209                | .602            | .685              | 2.047  | Y  | NA                          | NA                         | 111       |
| FN2S6               | 1/4          | .252                | .602            | .685              | 2.047  | Y  | NA                          | NA                         | 111       |
| FN2S8               | 5/16         | .331                | .602            | .685              | 2.047  | Y  | NA                          | NA                         | 111       |
| FN2S9               | 3/8          | .413                | .602            | .685              | 2.047  | Y  | NA                          | NA                         | 111       |
| FN29                | 3/8          | .413                | .866            | .697              | 2.193  | Y  | NA                          | NA                         | 111       |
| FN213               | 1/2          | .512                | .866            | .697              | 2.193  | Y  | NA                          | NA                         | 111       |



## Non-Insulated Flag Ring Terminals

### 2216 AWG Non-Insulated Flag Ring

**Material:** Tin Plated Copper with Brazed Seam

**Insulation Material:** None

**Maximum Electrical Current:** 18 Amps

**Maximum Temperature Rating:** 176°C

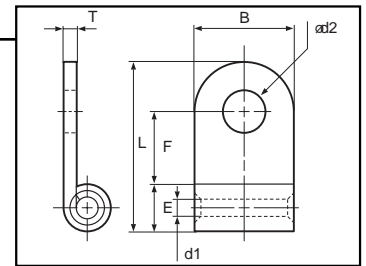
**Material Thickness (T):** .031

**Barrel ID (d1):** .067

**J Type:** .067

**Barrel OD (E):** .139

**J Type:** .134



| HOFFMAN PART NO. | STUD SIZE | DIMENSIONS (INCHES) |              |                |        | UL | HAND TOOL |
|------------------|-----------|---------------------|--------------|----------------|--------|----|-----------|
|                  |           | STUD DIAMETER       | TONGUE WIDTH | STUD CLEARANCE | LENGTH |    |           |
|                  |           | d2                  | W            | F              | L      |    |           |
| FG2216-4         | 8         | 0.169               | 0.378        | 0.291          | 0.610  | Y  | YG2216    |
| FG2216-5         | 10        | 0.209               | 0.378        | 0.315          | 0.642  | Y  | YG2216    |

### 1614 AWG Non-Insulated Flag Ring

**Material:** Tin Plated Copper with Brazed Seam

**Insulation Material:** None

**Maximum Electrical Current:** 30 Amps

**Maximum Temperature Rating:** 176°C

**Material Thickness (T):** .031

**Barrel ID:** .091

**J Type:** .091

**Barrel OD:** .161

**J Type:** .161

| HOFFMAN PART NO. | STUD SIZE | DIMENSIONS (INCHES) |              |                |        | UL | HAND TOOL |
|------------------|-----------|---------------------|--------------|----------------|--------|----|-----------|
|                  |           | STUD DIAMETER       | TONGUE WIDTH | STUD CLEARANCE | LENGTH |    |           |
|                  |           | d2                  | W            | F              | L      |    |           |
| FG1614-4/J       | 8         | 0.169               | 0.378        | 0.291          | 0.638  | Y  | YG2216    |
| FG1614-5         | 10        | 0.209               | 0.378        | 0.287          | 0.642  | Y  | YG2216    |
| FG1614-5/J       | 10        | 0.209               | 0.378        | 0.291          | 0.638  | Y  | YG2216    |
| FG1614-6         | 1/4       | 0.252               | 0.378        | 0.287          | 0.642  | Y  | YG2216    |
| FG1614-6/J       | 1/4       | 0.252               | 0.378        | 0.291          | 0.638  | Y  | YG2216    |

### 1210 AWG Non-Insulated Flag Ring

**Material:** Tin Plated Copper with Brazed Seam

**Insulation Material:** None

**Maximum Electrical Current:** 50 Amps

**Maximum Temperature Rating:** 176°C

**Material Thickness (T):** .039

**Barrel ID:** .139

**J Type:** .134

**Barrel OD:** .220

**J Type:** .220

| HOFFMAN PART NO. | STUD SIZE | DIMENSIONS    |              |                |        | UL | HAND TOOL |
|------------------|-----------|---------------|--------------|----------------|--------|----|-----------|
|                  |           | STUD DIAMETER | TONGUE WIDTH | STUD CLEARANCE | LENGTH |    |           |
|                  |           | d2            | W            | F              | L      |    |           |
| FG1210-4/J       | 8         | 0.169         | 0.378        | 0.291          | 0.701  | Y  | YG1210    |
| FG1210-5         | 10        | 0.209         | 0.378        | 0.291          | 0.701  | Y  | YG1210    |
| FG1210-5/J       | 10        | 0.209         | 0.378        | 0.291          | 0.701  | Y  | YG1210    |
| FG1210-6         | 1/4       | 0.252         | 0.378        | 0.291          | 0.701  | Y  | YG1210    |
| FG1210-6/J       | 1/4       | 0.252         | 0.378        | 0.291          | 0.701  | Y  | YG1210    |



## 8 AWG Non-Insulated Flag Ring

**Material:** Tin Plated Copper with Brazed Seam

**Insulation Material:** None

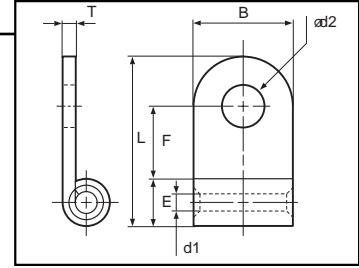
**Maximum Electrical Current:** 70 Amps

**Maximum Temperature Rating:** 176°C

**Material Thickness (T):** .047

**Barrel ID (d1):** .177    **J Type:** .177

**Barrel OD (E):** .283    **J Type:** .280



| HOFFMAN PART NO. | STUD SIZE | DIMENSIONS (INCHES) |              |                |        | UL | HAND TOOL |
|------------------|-----------|---------------------|--------------|----------------|--------|----|-----------|
|                  |           | STUD DIAMETER       | TONGUE WIDTH | STUD CLEARANCE | LENGTH |    |           |
|                  |           | d2                  | W            | F              | L      |    |           |
| FG85             | 10        | 0.209               | 0.500        | 0.358          | 0.906  | Y  | YG8S      |
| FG85/J           | 10        | 0.209               | 0.496        | 0.374          | 0.906  | Y  | YG8S      |
| FG86             | 1/4       | 0.252               | 0.500        | 0.358          | 0.906  | Y  | YG8S      |
| FG86/J           | 1/4       | 0.252               | 0.496        | 0.374          | 0.906  | Y  | YG8S      |
| FG88             | 5/16      | 0.331               | 0.610        | 0.543          | 1.13   | Y  | YG8S      |
| FG88/J           | 5/16      | 0.331               | 0.610        | 0.535          | 1.122  | Y  | YG8S      |
| FG89             | 3/8       | 0.413               | 0.610        | 0.543          | 1.114  | Y  | YG8S      |
| FG89/J           | 3/8       | 0.413               | 0.610        | 0.535          | 1.122  | Y  | YG8S      |

## 6 AWG Non-Insulated Flag Ring

**Material:** Tin Plated Copper with Brazed Seam

**Insulation Material:** None

**Maximum Electrical Current:** 95 Amps

**Maximum Temperature Rating:** 176°C

**Material Thickness (T):** .059

**Barrel ID (d1):** .228    **J Type:** .228

**Barrel OD (E):** .354    **J Type:** .354

| HOFFMAN PART NO. | STUD SIZE | DIMENSIONS (INCHES) |              |                |        | UL | HAND TOOL |
|------------------|-----------|---------------------|--------------|----------------|--------|----|-----------|
|                  |           | STUD DIAMETER       | TONGUE WIDTH | STUD CLEARANCE | LENGTH |    |           |
|                  |           | d2                  | W            | F              | L      |    |           |
| FG65/J           | 10        | 0.209               | 0.496        | 0.382          | 0.984  | Y  | YG14S     |
| FG66             | 1/4       | 0.252               | 0.500        | 0.378          | 0.980  | Y  | YG14S     |
| FG66/J           | 1/4       | 0.252               | 0.496        | 0.382          | 0.984  | Y  | YG14S     |
| FG68             | 5/16      | 0.331               | 0.630        | 0.531          | 1.201  | Y  | YG14S     |
| FG69             | 3/8       | 0.413               | 0.622        | 0.531          | 1.201  | Y  | YG14S     |





**4 AWG Non-Insulated Flag Ring**

**Material:** Tin Plated Copper with Brazed Seam

**Insulation Material:** None

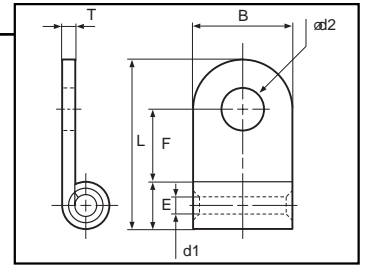
**Maximum Electrical Current:** 125 Amps

**Maximum Temperature Rating:** 176°C

**Material Thickness (T):** .067, J Type .071

**Barrel ID (d1):** .303 **J Type:** .303

**Barrel OD (E):** .453 **J Type:** .453



| HOFFMAN PART NO. | STUD SIZE | DIMENSIONS (INCHES) |                   |                     |       | LENGTH | UL  | *PNEUMATIC TOOL |
|------------------|-----------|---------------------|-------------------|---------------------|-------|--------|-----|-----------------|
|                  |           | STUD DIAMETER<br>d2 | TONGUE WIDTH<br>W | STUD CLEARANCE<br>F | L     |        |     |                 |
| FG45/J           | 10        | 0.209               | 0.551             | 0.378               | 1.102 | Y      | YA5 |                 |
| FG46             | 1/4       | 0.252               | 0.551             | 0.382               | 1.110 | Y      |     |                 |
| FG46/J           | 1/4       | 0.252               | 0.551             | 0.378               | 1.102 | Y      |     |                 |
| FG48             | 5/16      | 0.331               | 0.689             | 0.543               | 1.339 | Y      |     |                 |
| FG48/J           | 5/16      | 0.331               | 0.689             | 0.543               | 1.339 | Y      |     |                 |
| FG49             | 3/8       | 0.413               | 0.689             | 0.543               | 1.339 | Y      |     |                 |

**2 AWG Non-Insulated Flag Ring**

**Material:** Tin Plated Copper with Brazed Seam

**Insulation Material:** None

**Maximum Electrical Current:** 170 Amps

**Maximum Temperature Rating:** 176°C

**Material Thickness (T):** .071

**Barrel ID (d1):** .370 **J Type:** .370

**Barrel OD (E):** .524 **J Type:** .524

| HOFFMAN PART NO. | STUD SIZE | DIMENSIONS (INCHES) |                   |                     |       | LENGTH | UL  | *PNEUMATIC TOOL |
|------------------|-----------|---------------------|-------------------|---------------------|-------|--------|-----|-----------------|
|                  |           | STUD DIAMETER<br>d2 | TONGUE WIDTH<br>W | STUD CLEARANCE<br>F | L     |        |     |                 |
| FG26             | 1/4       | 0.252               | 0.72              | 0.535               | 1.421 | Y      | YA5 |                 |
| FG26/J           | 1/4       | 0.252               | 0.717             | 0.535               | 1.417 | Y      |     |                 |
| FG28             | 5/16      | 0.331               | 0.72              | 0.535               | 1.421 | Y      |     |                 |
| FG28/J           | 5/16      | 0.331               | 0.717             | 0.535               | 1.417 | Y      |     |                 |
| FG29             | 3/8       | 0.413               | 0.72              | 0.535               | 1.421 | Y      |     |                 |
| FG29/J           | 3/8       | 0.413               | 0.717             | 0.535               | 1.417 | Y      |     |                 |

\*Refer to Tool Selector Chart ([page 92-93](#)) for Tool Die Numbers.



## 1/0 AWG Non-Insulated Flag Ring

**Material:** Tin Plated Copper with Brazed Seam

**Insulation Material:** None

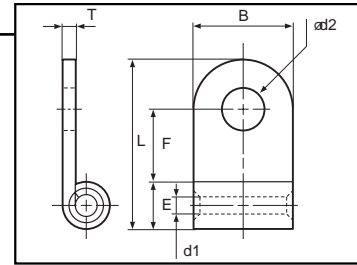
**Maximum Electrical Current:** 230 Amps

**Maximum Temperature Rating:** 176°C

**Material Thickness (T):** .071 **J Type:** .079

**Barrel ID (d1):** .449 **J Type:** .370

**Barrel OD (E):** .610 **J Type:** .524



| HOFFMAN PART NO. | STUD SIZE | DIMENSIONS (INCHES) |              |                |        | UL | *PNEUMATIC TOOL |
|------------------|-----------|---------------------|--------------|----------------|--------|----|-----------------|
|                  |           | STUD DIAMETER       | TONGUE WIDTH | STUD CLEARANCE | LENGTH |    |                 |
|                  |           | d2                  | W            | F              | L      |    |                 |
| FG1/06           | 1/4       | 0.252               | 0.878        | 0.681          | 1.732  | Y  | YA5             |
| FG1/06/J         | 1/4       | 0.252               | 0.866        | 0.693          | 1.732  | Y  |                 |
| FG1/08           | 5/16      | 0.331               | 0.878        | 0.681          | 1.732  | Y  |                 |
| FG1/08/J         | 5/16      | 0.331               | 0.866        | 0.693          | 1.732  | Y  |                 |
| FG1/09           | 3/8       | 0.413               | 0.878        | 0.681          | 1.732  | Y  |                 |
| FG1/09/J         | 3/8       | 0.413               | 0.866        | 0.693          | 1.732  | Y  |                 |
| FG1/013          | 1/2       | 0.512               | 0.878        | 0.681          | 1.732  | Y  |                 |
| FG1/013/J        | 1/2       | 0.512               | 0.866        | 0.693          | 1.732  | Y  |                 |

## 2/0 AWG Non-Insulated Flag Ring

**Material:** Tin Plated Copper with Brazed Seam

**Insulation Material:** None

**Maximum Electrical Current:** 265 Amps

**Maximum Temperature Rating:** 176°C

**Material Thickness (T):** .079

**Barrel ID (d1):** .524 **J Type:** .524

**Barrel OD (E):** .689 **J Type:** .689

| HOFFMAN PART NO. | STUD SIZE | DIMENSIONS (INCHES) |              |                |        | UL | *PNEUMATIC TOOL |
|------------------|-----------|---------------------|--------------|----------------|--------|----|-----------------|
|                  |           | STUD DIAMETER       | TONGUE WIDTH | STUD CLEARANCE | LENGTH |    |                 |
|                  |           | d2                  | W            | F              | L      |    |                 |
| FG2/08           | 5/16      | 0.331               | 0.941        | 0.681          | 1.839  | Y  | YA5             |
| FG2/08/J         | 5/16      | 0.331               | 0.937        | 0.689          | 1.850  | Y  |                 |
| FG2/09           | 3/8       | 0.413               | 0.941        | 0.681          | 1.839  | Y  |                 |
| FG2/09/J         | 3/8       | 0.413               | 0.937        | 0.689          | 1.850  | Y  |                 |
| FG2/013          | 1/2       | 0.512               | 0.941        | 0.681          | 1.839  | Y  |                 |
| FG2/013/J        | 1/2       | 0.512               | 0.937        | 0.689          | 1.850  | Y  |                 |

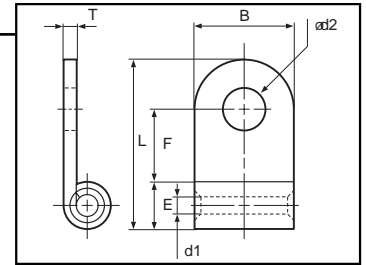
\*Refer to Tool Selector Chart ([page 92-93](#)) for Tool Die Numbers.



**3/0 AWG Non-Insulated Flag Ring**

**Material:** Tin Plated Copper with Brazed Seam  
**Insulation Material:** None  
**Maximum Electrical Current:** 310 Amps  
**Maximum Temperature Rating:** 176°C  
**Material Thickness (T):** .091

**Barrel ID (d1):** .524    **J Type:** .524  
**Barrel OD (E):** .689    **J Type:** .689



| HOFFMAN PART NO. | STUD SIZE | DIMENSIONS (INCHES) |                   |                     |             | UL |
|------------------|-----------|---------------------|-------------------|---------------------|-------------|----|
|                  |           | STUD DIAMETER<br>d2 | TONGUE WIDTH<br>W | STUD CLEARANCE<br>F | LENGTH<br>L |    |
| FG3/08/J         | 5/16      | 0.331               | 1.063             | 0.713               | 2.008       | Y  |
| FG3/09           | 3/8       | 0.413               | 1.063             | 0.701               | 2.000       | Y  |
| FG3/09/J         | 3/8       | 0.413               | 1.063             | 0.713               | 2.008       | Y  |
| FG3/013          | 1/2       | 0.512               | 1.063             | 0.701               | 2.000       | Y  |
| FG3/013/J        | 1/2       | 0.512               | 1.063             | 0.713               | 2.008       | Y  |

**4/0 AWG Non-Insulated Flag Ring**

**Material:** Tin Plated Copper with Brazed Seam  
**Insulation Material:** None  
**Maximum Electrical Current:** 360 Amps  
**Maximum Temperature Rating:** 176°C  
**Material Thickness (T):** .091

**Barrel ID (d1):** .524  
**Barrel OD (E):** .689

| HOFFMAN PART NO. | STUD SIZE | DIMENSIONS (INCHES) |                   |                     |             | UL |
|------------------|-----------|---------------------|-------------------|---------------------|-------------|----|
|                  |           | STUD DIAMETER<br>d2 | TONGUE WIDTH<br>W | STUD CLEARANCE<br>F | LENGTH<br>L |    |
| FG4/08/J         | 5/16      | 0.331               | 1.126             | 0.697               | 2.126       | Y  |
| FG4/09/J         | 3/8       | 0.413               | 1.126             | 0.697               | 2.126       | Y  |
| FG4/013/J        | 1/2       | 0.512               | 1.126             | 0.697               | 2.126       | Y  |

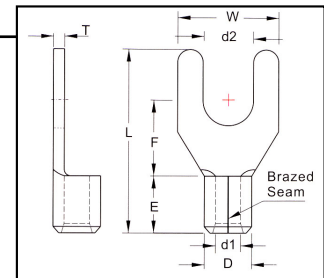


## Non-Insulated Spade Terminals

### 2622 AWG Non-Insulated Spade Terminal

**Material:** Tin Plated Copper with Brazed Seam  
**Maximum Electrical Current:** 9 Amps  
**Material Thickness (T):** .0197

**Barrel ID (d1):** .039  
**Barrel OD (D):** .079  
**Barrel Length (F):** .157



| HOFFMAN PART NO. | STUD SIZE | DIMENSIONS (INCHES) |                   |                     |             | UL | TAPE MOUNTED REEL QTY | DIE FOR TAPE MOUNTED | HAND TOOL |
|------------------|-----------|---------------------|-------------------|---------------------|-------------|----|-----------------------|----------------------|-----------|
|                  |           | STUD DIAMETER<br>d2 | TONGUE WIDTH<br>W | STUD CLEARANCE<br>I | LENGTH<br>L |    |                       |                      |           |
| 2622-3A          | 4         | 0.126               | 0.197             | 0.157               | 0.315       | Y  | NA                    | NA                   | YHT2622   |
| 2622-3.7A        | 6         | 0.146               | 0.236             | 0.275               | 0.433       | Y  | NA                    | NA                   | YHT2622   |
| 2622-4A          | 8         | 0.169               | 0.256             | 0.275               | 0.433       | Y  | NA                    | NA                   | YHT2622   |

### 2216 AWG Non-Insulated Spade Terminal

**Material:** Tin Plated Copper with Brazed Seam  
**Maximum Electrical Current:** 18 Amps  
**Material Thickness (T):** .030

**Barrel ID (d1):** .067  
**Barrel OD (D):** .134  
**Barrel Length (F):** .189

| HOFFMAN PART NO. | STUD SIZE | DIMENSIONS (INCHES) |                   |                     |             | UL | TAPE MOUNTED REEL QTY | DIE FOR TAPE MOUNTED | HAND TOOL |
|------------------|-----------|---------------------|-------------------|---------------------|-------------|----|-----------------------|----------------------|-----------|
|                  |           | STUD DIAMETER<br>d2 | TONGUE WIDTH<br>W | STUD CLEARANCE<br>I | LENGTH<br>L |    |                       |                      |           |
| 2216-M3A         | 4         | 0.126               | 0.224             | 0.256               | 0.63        | Y  | 1000                  | 3H2216               | YHM228    |
| 2216-YS3A        | 6         | 0.146               | 0.252             | 0.256               | 0.63        | Y  | 1000                  | 3H2216               | YHM228    |
| 2216-S3A         | 6         | 0.146               | 0.283             | 0.256               | 0.63        | Y  | 1000                  | 3H2216               | YHM228    |
| 2216-S4A         | 8         | 0.169               | 0.283             | 0.256               | 0.63        | Y  | 1000                  | 3H2216               | YHM228    |
| 2216-4A          | 8         | 0.169               | 0.319             | 0.256               | 0.63        | Y  | 1000                  | 3H2216               | YHM228    |
| 2216-M5A         | 10        | 0.209               | 0.319             | 0.256               | 0.63        | Y  | 1000                  | 3H2216               | YHM228    |
| 2216-6A          | 1/4       | 0.252               | 0.472             | 0.433               | 0.866       | Y  | 1000                  | 3H2216               | YHM228    |

### 1614 AWG Non-Insulated Spade Terminal

**Material:** Tin Plated Copper with Brazed Seam  
**Maximum Electrical Current:** 30 Amps  
**Material Thickness (T):** .031

**Barrel ID (d1):** .091  
**Barrel OD (D):** .161  
**Barrel Length (F):** .189

| PART NO.  | STUD SIZE | DIMENSIONS (INCHES) |                   |                     |             | UL | TAPE MOUNTED REEL QT | DIE FOR TAPE MOUNTED | HAND TOOL |
|-----------|-----------|---------------------|-------------------|---------------------|-------------|----|----------------------|----------------------|-----------|
|           |           | STUD DIAMETER<br>d2 | TONGUE WIDTH<br>W | STUD CLEARANCE<br>E | LENGTH<br>L |    |                      |                      |           |
| 1614-YS3A | 6         | 0.146               | 0.236             | 0.256               | 0.63        | Y  | 1000                 | 3H1614               | YHM228    |
| 1614-S3A  | 6         | 0.146               | 0.283             | 0.256               | 0.63        | Y  | 1000                 | 3H1614               | YHM228    |
| 1614-S4A  | 8         | 0.169               | 0.283             | 0.256               | 0.63        | Y  | 1000                 | 3H1614               | YHM228    |
| 1614-4A   | 8         | 0.169               | 0.319             | 0.256               | 0.63        | Y  | 1000                 | 3H1614               | YHM228    |
| 1614-M5A  | 10        | 0.209               | 0.319             | 0.256               | 0.63        | Y  | 1000                 | 3H1614               | YHM228    |
| 1614-5A   | 10        | 0.209               | 0.366             | 0.256               | 0.63        | Y  | 1000                 | 3H1614               | YHM228    |
| 1614-6A   | 1/4       | 0.252               | 0.472             | 0.433               | 0.866       | Y  | 1000                 | 3H1614               | YHM228    |



**1210 AWG Non-Insulated Spade Terminals**

**Material:** Tin Plated Copper with Brazed Seam

**Maximum Electrical Current:** 50 Amps

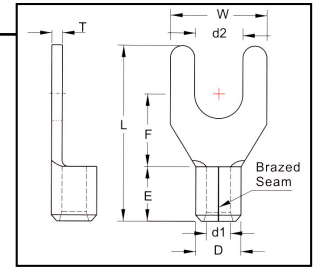
**Material Thickness (T):** .039

**Barrel ID (d1):** .134

**Barrel OD (D):** .220

**Barrel Length (F):** .236

**J type:** .268



| HOFFMAN PART NO. | STUD SIZE | DIMENSIONS (INCHES) |                   |                     |             | UL | TAPE MOUNTED REEL QTY | DIE FOR TAPE MOUNTED | HAND TOOL |
|------------------|-----------|---------------------|-------------------|---------------------|-------------|----|-----------------------|----------------------|-----------|
|                  |           | STUD DIAMETER<br>d2 | TONGUE WIDTH<br>W | STUD CLEARANCE<br>I | LENGTH<br>L |    |                       |                      |           |
| 1210-S3A         | 6         | 0.146               | 0.283             | 0.295               | 0.685       | Y  | 1000                  | 3H1210               | YHM228    |
| 1210-S3A/J       | 6         | 0.146               | 0.283             | 0.295               | 0.768       | Y  | 1000                  | 3H1210               | YHT2210   |
| 1210-S4A         | 8         | 0.169               | 0.327             | 0.276               | 0.728       | Y  | 1000                  | 3H1210               | YHM228    |
| 1210-4A          | 8         | 0.169               | 0.354             | 0.276               | 0.728       | Y  | 1000                  | 3H1210               | YHM228    |
| 1210-5A          | 10        | 0.209               | 0.354             | 0.276               | 0.728       | Y  | 1000                  | 3H1210               | YHM228    |
| 1210-S6A         | 1/4       | 0.252               | 0.354             | 0.276               | 0.728       | Y  | 1000                  | 3H1210               | YHM228    |
| 1210-6A          | 1/4       | 0.252               | 0.472             | 0.472               | 0.965       | Y  | 1000                  | 3H1210               | YHM228    |

**Vinyl Insulated Spade Terminals**

**2216 AWG Vinyl Insulated Spade Terminals**

**Material:** Tin Plated Copper with Butted Seam

**Insulation Material:** Red Vinyl with Funnel Entry

**Maximum Electrical Current:** 18 Amps

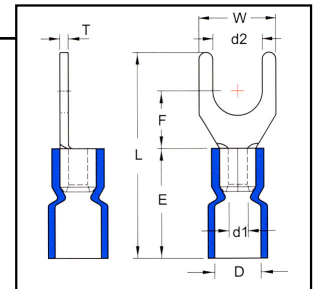
**Maximum Electrical Rating:** 75°C, 600V

**Material Thickness (T):** .030

**Barrel ID (d1):** .067

**Barrel OD (D):** .157

**Barrel Length (E):** .441



| HOFFMAN PART NO. | STUD SIZE | DIMENSIONS (INCHES) |                   |                     |             | UL | TAPE MOUNTED REEL QTY | DIE FOR TAPE MOUNTED | HAND TOOL |
|------------------|-----------|---------------------|-------------------|---------------------|-------------|----|-----------------------|----------------------|-----------|
|                  |           | STUD DIAMETER<br>d2 | TONGUE WIDTH<br>W | STUD CLEARANCE<br>F | LENGTH<br>L |    |                       |                      |           |
| FVL2216M3AR2     | 4         | 0.126               | 0.224             | 0.256               | 0.874       | Y  | 1000                  | 3V2216               | YNM2210   |
| FVL2216YS3AR2    | 6         | 0.146               | 0.252             | 0.256               | 0.874       | Y  | 1000                  | 3V2216               | YNM2210   |
| FVL2216S3AR2     | 6         | 0.146               | 0.283             | 0.256               | 0.874       | Y  | 1000                  | 3V2216               | YNM2210   |
| FVL2216YS4AR2    | 8         | 0.169               | 0.252             | 0.256               | 0.874       | Y  | 1000                  | 3V2216               | YNM2210   |
| FVL2216S4AR2     | 8         | 0.169               | 0.283             | 0.256               | 0.874       | Y  | 1000                  | 3V2216               | YNM2210   |
| FVL2216M5AR2     | 10        | 0.209               | 0.319             | 0.256               | 0.874       | Y  | 1000                  | 3V2216               | YNM2210   |
| FVL2216-6AR2     | 1/4       | 0.252               | 0.472             | 0.433               | 1.11        | Y  | 1000                  | 3V2216               | YNM2210   |



## 1614 AWG Vinyl Insulated Spade Terminals

**Material:** Tin Plated Copper with Butted Seam

**Insulation Material:** Blue Vinyl with Funnel Entry

**Maximum Electrical Current:** 30 Amps

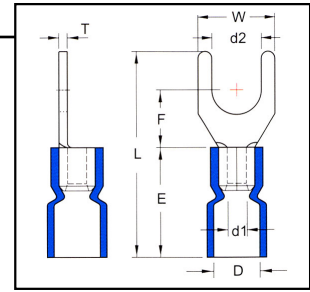
**Barrel ID (d1):** .091

**Maximum Electrical Rating:** 75°C, 600V

**Barrel OD (D):** .177

**Material Thickness (T):** .031

**Barrel Length (E):** .453



| HOFFMAN<br>PART NO. | STUD<br>SIZE | DIMENSIONS (INCHES) |                 |                   |        | UL | TAPE<br>MOUNTED<br>REEL QTY | DIE FOR<br>TAPE<br>MOUNTED | HAND TOOL |
|---------------------|--------------|---------------------|-----------------|-------------------|--------|----|-----------------------------|----------------------------|-----------|
|                     |              | STUD<br>DIAMETER    | TONGUE<br>WIDTH | STUD<br>CLEARANCE | LENGTH |    |                             |                            |           |
|                     |              | d2                  | W               | F                 | L      |    |                             |                            |           |
| FVL1614YS3AR2       | 6            | 0.146               | 0.236           | 0.256             | 0.886  | Y  | 1000                        | 3V1614                     | YNM2210   |
| FVL1614S3AR2        | 6            | 0.146               | 0.283           | 0.256             | 0.886  | Y  | 1000                        | 3V1614                     | YNM2210   |
| FVL1614YS4AR2       | 8            | 0.169               | 0.252           | 0.256             | 0.886  | Y  | 1000                        | 3V1614                     | YNM2210   |
| FVL1614S4AR2        | 8            | 0.169               | 0.283           | 0.256             | 0.886  | Y  | 1000                        | 3V1614                     | YNM2210   |
| FVL16144AR2         | 8            | 0.169               | 0.311           | 0.256             | 0.886  | Y  | 1000                        | 3V1614                     | YNM2210   |
| FVL1614M5AR2        | 10           | 0.209               | 0.311           | 0.256             | 0.886  | Y  | 1000                        | 3V1614                     | YNM2210   |
| FVL16145AR2         | 10           | 0.209               | 0.366           | 0.256             | 0.886  | Y  | 1000                        | 3V1614                     | YNM2210   |
| FVL16146AR2         | 1/4          | 0.252               | 0.472           | 0.433             | 1.110  | Y  | 1000                        | 3V1614                     | YNM2210   |

## 1210 AWG Vinyl Insulated Spade Terminals

**Material:** Tin Plated Copper with Butted Seam

**Insulation Material:** Yellow Vinyl with Funnel Entry

**Maximum Electrical Current:** 50 Amps

**Barrel ID (d1):** .134

**Maximum Electrical Rating:** 75°C, 600V

**Barrel OD (D):** .248

**Material Thickness (T):** .039

**Barrel Length (E):** .555

| HOFFMAN<br>PART NO. | STUD<br>SIZE | DIMENSIONS (INCHES) |                 |                   |        | UL | TAPE<br>MOUNTED<br>REEL QTY | DIE FOR<br>TAPE<br>MOUNTED | HAND TOOL |
|---------------------|--------------|---------------------|-----------------|-------------------|--------|----|-----------------------------|----------------------------|-----------|
|                     |              | STUD<br>DIAMETER    | TONGUE<br>WIDTH | STUD<br>CLEARANCE | LENGTH |    |                             |                            |           |
|                     |              | d2                  | W               | F                 | L      |    |                             |                            |           |
| FVL1210S3AR2        | 6            | 0.146               | 0.283           | 0.295             | 1.004  | Y  | 1000                        | 3V1210                     | YNM2210   |
| FVL1210S4AR2        | 8            | 0.169               | 0.327           | 0.276             | 1.047  | Y  | 1000                        | 3V1210                     | YNM2210   |
| FVL12105AR2         | 10           | 0.209               | 0.354           | 0.276             | 1.047  | Y  | 1000                        | 3V1210                     | YNM2210   |
| FVL12106AR2         | 1/4          | 0.252               | 0.472           | 0.472             | 1.283  | Y  | 1000                        | 3V1210                     | YNM2210   |

# Vinyl Insulated Fork Terminals with Support Sleeve

## 2216 AWG Vinyl Insulated Spade Terminals with Support Sleeve

**Material:** Tin Plated Copper with Butted Seam

**Insulation Material:** Red Vinyl with Funnel Entry Copper Support Sleeve

**Maximum Electrical Current:** 18 Amps

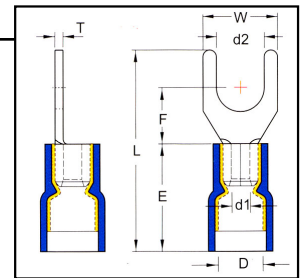
**Barrel ID (d1):** .067

**Maximum Electrical Rating:** 75°C, 600V

**Barrel OD (D):** .165

**Material Thickness (T):** .030

**Barrel Length (E):** .413



| HOFFMAN PART NO. | STUD SIZE | DIMENSIONS (INCHES) |                |                  |          | UL | TAPE MOUNTED REEL QTY | DIE FOR TAPE MOUNTED | HAND TOOL |
|------------------|-----------|---------------------|----------------|------------------|----------|----|-----------------------|----------------------|-----------|
|                  |           | STUD DIAMETER d2    | TONGUE WIDTH W | STUD CLEARANCE F | LENGTH L |    |                       |                      |           |
| FVD2216M3A       | 4         | 0.126               | 0.224          | 0.256            | 0.846    | Y  | 1000                  | 3V2216               | YNM2210D  |
| FVD2216YS3A      | 6         | 0.146               | 0.252          | 0.256            | 0.846    | Y  | 1000                  | 3V2216               | YNM2210D  |
| FVD2216S3A       | 6         | 0.146               | 0.283          | 0.256            | 0.846    | Y  | 1000                  | 3V2216               | YNM2210D  |
| FVD2216S4A       | 8         | 0.169               | 0.283          | 0.256            | 0.846    | Y  | 1000                  | 3V2216               | YNM2210D  |
| FVD2216M5A       | 10        | 0.209               | 0.319          | 0.256            | 0.846    | Y  | 1000                  | 3V2216               | YNM2210D  |
| FVD22166A        | 1/4       | 0.252               | 0.472          | 0.433            | 1.083    | Y  | 1000                  | 3V2216               | YNM2210D  |

## 1614 AWG Vinyl Insulated Spade Terminals with Support Sleeve

**Material:** Tin Plated Copper with Butted Seam

**Insulation Material:** Blue Vinyl with Funnel Entry Copper Support Sleeve

**Maximum Electrical Current:** 30 Amps

**Barrel ID (d1):** .091

**Maximum Electrical Rating:** 75°C, 600V

**Barrel OD (D):** .197

**Material Thickness (T):** .031

**Barrel Length (E):** .413

| HOFFMAN PART NO. | STUD SIZE | DIMENSIONS (INCHES) |                |                  |          | UL | TAPE MOUNTED REEL QT | DIE FOR TAPE MOUNTED | HAND TOOL |
|------------------|-----------|---------------------|----------------|------------------|----------|----|----------------------|----------------------|-----------|
|                  |           | STUD DIAMETER d2    | TONGUE WIDTH W | STUD CLEARANCE F | LENGTH L |    |                      |                      |           |
| FVD1614YS3A      | 6         | 0.146               | 0.236          | 0.256            | 0.846    | Y  | 1000                 | 3V1614               | YNM2210D  |
| FVD1614S3A       | 6         | 0.146               | 0.283          | 0.256            | 0.846    | Y  | 1000                 | 3V1614               | YNM2210D  |
| FVD1614YS4A      | 8         | 0.169               | 0.252          | 0.256            | 0.846    | Y  | 1000                 | 3V1614               | YNM2210D  |
| FVD1614S4A       | 8         | 0.169               | 0.283          | 0.256            | 0.846    | Y  | 1000                 | 3V1614               | YNM2210D  |
| FVD16144A        | 8         | 0.169               | 0.311          | 0.256            | 0.846    | Y  | 1000                 | 3V1614               | YNM2210D  |
| FVD1614M5A       | 10        | 0.209               | 0.311          | 0.256            | 0.846    | Y  | 1000                 | 3V1614               | YNM2210D  |
| FVD16145A        | 10        | 0.209               | 0.366          | 0.256            | 0.846    | Y  | 1000                 | 3V1614               | YNM2210D  |
| FVD16146A        | 1/4       | 0.252               | 0.472          | 0.433            | 1.083    | Y  | 1000                 | 3V1614               | YNM2210D  |



## 1210 AWG Vinyl Insulated Spade Terminals with Support Sleeve

**Material:** Tin Plated Copper with Butted Seam

**Insulation Material:** Yellow Vinyl with Funnel Entry Copper Support Sleeve

**Maximum Electrical Current:** 50 Amps

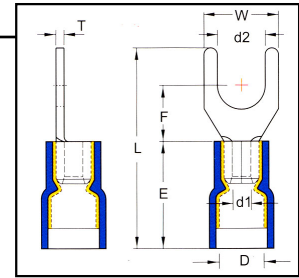
**Barrel ID (d1):** .134

**Maximum Electrical Rating:** 75°C, 600V

**Barrel OD (D):** .268

**Material Thickness (T):** .039

**Barrel Length (E):** .531



| HOFFMAN PART NO. | STUD SIZE | DIMENSIONS (INCHES) |                   |                     |             | UL | TAPE MOUNTED REEL QTY | DIE FOR TAPE MOUNTED | HAND TOOL |
|------------------|-----------|---------------------|-------------------|---------------------|-------------|----|-----------------------|----------------------|-----------|
|                  |           | STUD DIAMETER<br>d2 | TONGUE WIDTH<br>W | STUD CLEARANCE<br>F | LENGTH<br>L |    |                       |                      |           |
| FVD1210S3A       | 6         | .146                | .283              | .295                | .980        | Y  | 1000                  | 3V1210               | YNM2210D  |
| FVD1210S4A       | 8         | .169                | .327              | .276                | 1.024       | Y  | 1000                  | 3V1210               | YNM2210D  |
| FVD12105A        | 10        | .209                | .354              | .276                | 1.024       | Y  | 1000                  | 3V1210               | YNM2210D  |
| FVD12106A        | 1/4       | .252                | .472              | .472                | 1.260       | Y  | 1000                  | 3V1210               | YNM2210D  |

## Nylon Insulated Spade Terminals

### 2622 AWG Nylon Insulated Spade with Support Sleeve

**Material:** Tin Plated Copper with Butted Seam

**Insulation Material:** Yellow 6/6 Nylon with Funnel Entry Copper Support Sleeve

**Maximum Electrical Current:** 8 Amps

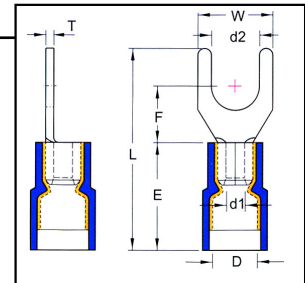
**Barrel ID (d1):** .039

**Maximum Electrical Rating:** 75°C, 600V

**Barrel OD (D):** .091

**Material Thickness (T):** .197

**Barrel Length (E):** .315



| HOFFMAN PART NO. | STUD SIZE | DIMENSIONS (INCHES) |                   |                     |             | UL | TAPE MOUNTED REEL QT | DIE FOR TAPE MOUNTED | HAND TOOL |
|------------------|-----------|---------------------|-------------------|---------------------|-------------|----|----------------------|----------------------|-----------|
|                  |           | STUD DIAMETER<br>d2 | TONGUE WIDTH<br>W | STUD CLEARANCE<br>F | LENGTH<br>L |    |                      |                      |           |
| FND26222A/J      | 4         | 0.126               | 0.181             | 0.177               | 0.673       | N  | NA                   | NA                   | YNT2622   |
| FND26223.7A/J    | 6         | 0.146               | 0.252             | 0.303               | 0.760       | N  | NA                   | NA                   | YNT2622   |
| FND26224A/J      | 8         | 0.169               | 0.276             | 0.248               | 0.801       | N  | NA                   | NA                   | YNT2622   |



**2216 AWG Nylon Insulated Spade Terminals with Support Sleeve**

**Material:** Tin Plated Copper with Butted Seam

**Insulation Material:** Red 6/6 Nylon with Funnel Entry Copper Support Sleeve

**Maximum Electrical Current:** 18 Amps

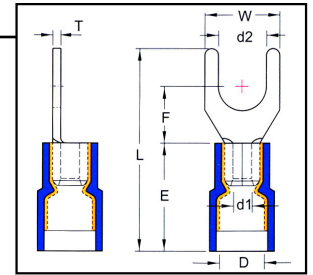
**Barrel ID (d1):** .067

**Maximum Electrical Rating:** 75°C, 600V

**Barrel OD (D):** .177

**Material Thickness (T):** .030

**Barrel Length (E):** .433



| HOFFMAN PART NO. | STUD SIZE | DIMENSIONS (INCHES) |              |                |        | UL | TAPE MOUNTED REEL QT | DIE FOR TAPE MOUNTED | HAND TOOL |
|------------------|-----------|---------------------|--------------|----------------|--------|----|----------------------|----------------------|-----------|
|                  |           | STUD DIAMETER       | TONGUE WIDTH | STUD CLEARANCE | LENGTH |    |                      |                      |           |
|                  |           | d2                  | W            | F              | L      |    |                      |                      |           |
| FND2216M3A       | 4         | 0.126               | 0.224        | 0.256          | 0.866  | Y  | 1000                 | 3V2216               | YNM2210D  |
| FND2216YS3A      | 6         | 0.146               | 0.252        | 0.256          | 0.866  | Y  | 1000                 | 3V2216               | YNM2210D  |
| FND2216S3A       | 6         | 0.146               | 0.283        | 0.256          | 0.866  | Y  | 1000                 | 3V2216               | YNM2210D  |
| FND2216S4A       | 8         | 0.169               | 0.283        | 0.256          | 0.866  | Y  | 1000                 | 3V2216               | YNM2210D  |
| FND2216M5A       | 10        | 0.209               | 0.319        | 0.256          | 0.866  | Y  | 1000                 | 3V2216               | YNM2210D  |
| FND22166A        | 1/4       | 0.252               | 0.472        | 0.433          | 1.102  | Y  | 1000                 | 3V2216               | YNM2210D  |

**1614 AWG Nylon Insulated Spade Terminals with Support Sleeve**

**Material:** Tin Plated Copper with Butted Seam

**Insulation Material:** Blue PVC Vinyl with Funnel Entry Copper Support Sleeve

**Maximum Electrical Current:** 30 Amps

**Barrel ID (d1):** .091

**Maximum Electrical Rating:** 75°C, 600V

**Barrel OD (D):** .205

**Material Thickness (T):** .031

**Barrel Length (E):** .433

| HOFFMAN PART NO. | STUD SIZE | DIMENSIONS (INCHES) |              |                |        | UL | TAPE MOUNTED REEL QT | DIE FOR TAPE MOUNTED | HAND TOOL |
|------------------|-----------|---------------------|--------------|----------------|--------|----|----------------------|----------------------|-----------|
|                  |           | STUD DIAMETER       | TONGUE WIDTH | STUD CLEARANCE | LENGTH |    |                      |                      |           |
|                  |           | d2                  | W            | F              | L      |    |                      |                      |           |
| FND1614YS3A      | 6         | 0.146               | 0.236        | 0.256          | 0.866  | Y  | 1000                 | 3V1614               | YNM2210D  |
| FND1614S3A       | 6         | 0.146               | 0.283        | 0.256          | 0.866  | Y  | 1000                 | 3V1614               | YNM2210D  |
| FND1614YS4A      | 8         | 0.169               | 0.252        | 0.256          | 0.866  | Y  | 1000                 | 3V1614               | YNM2210D  |
| FND1614S4A       | 8         | 0.169               | 0.283        | 0.256          | 0.866  | Y  | 1000                 | 3V1614               | YNM2210D  |
| FND16144A        | 8         | 0.169               | 0.311        | 0.256          | 0.866  | Y  | 1000                 | 3V1614               | YNM2210D  |
| FND1614M5A       | 10        | 0.209               | 0.311        | 0.256          | 0.866  | Y  | 1000                 | 3V1614               | YNM2210D  |
| FND16145A        | 10        | 0.209               | 0.366        | 0.256          | 0.866  | Y  | 1000                 | 3V1614               | YNM2210D  |
| FND16146A        | 1/4       | 0.252               | 0.472        | 0.433          | 1.102  | Y  | 1000                 | 3V1614               | YNM2210D  |



## 1210 AWG Nylon Insulated Spade Terminals with Support Sleeve

**Material:** Tin Plated Copper with Butted Seam

**Insulation Material:** Yellow 6/6 Nylon with Funnel Entry Copper Support Sleeve

**Maximum Electrical Current:** 50 Amps

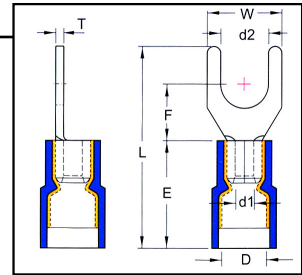
**Maximum Electrical Rating:** 75°C, 600V

**Material Thickness (T):** .039

**Barrel ID (d1):** .134

**Barrel OD (D):** .276

**Barrel Length (E):** .512



| HOFFMAN PART NO. | STUD SIZE | DIMENSIONS (INCHES) |                |                  |          | UL | TAPE MOUNTED REEL QT | DIE FOR TAPE MOUNTED | HAND TOOL |
|------------------|-----------|---------------------|----------------|------------------|----------|----|----------------------|----------------------|-----------|
|                  |           | STUD DIAMETER d2    | TONGUE WIDTH W | STUD CLEARANCE F | LENGTH L |    |                      |                      |           |
| FND1210S3A       | 6         | 0.146               | 0.283          | 0.295            | 0.961    | Y  | 500                  | 3V1210               | YNM2210D  |
| FND1210S4A       | 8         | 0.169               | 0.327          | 0.276            | 1.004    | Y  | 500                  | 3V1210               | YNM2210D  |
| FND1210-5A       | 10        | 0.209               | 0.354          | 0.276            | 1.004    | Y  | 500                  | 3V1210               | YNM2210D  |
| FND1210S6A       | 1/4       | 0.252               | 0.354          | 0.276            | 1.004    | Y  | 500                  | 3V1210               | YNM2210D  |
| FND1210-6A       | 1/4       | 0.252               | 0.472          | 0.472            | 1.24     | Y  | 500                  | 3V1210               | YNM2210D  |

[Click Here for Hand Tools](#)

(Crimping Tools Section - page 96)

## Non-Insulated Flanged Spade Terminal

### 2216 AWG Non-Insulated Flanged Spade

**Material:** Tin Plated Copper with Brazed Seam

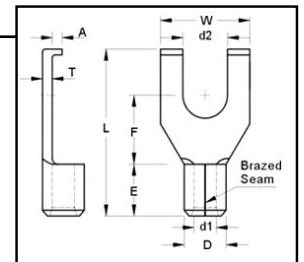
**Maximum Electrical Current:** 18 Amps

**Material Thickness (T):** .030

**Barrel ID (d1):** .067

**Barrel OD (D):** .134

**Barrel Length (E):** .189



| HOFFMAN PART NO. | STUD SIZE | DIMENSIONS (INCHES) |                   |                     |             |                    | UL | TAPE MOUNTED REEL QTY | DIE FOR TAPE MOUNTED | HAND TOOL |
|------------------|-----------|---------------------|-------------------|---------------------|-------------|--------------------|----|-----------------------|----------------------|-----------|
|                  |           | STUD DIAMETER<br>d2 | TONGUE WIDTH<br>W | STUD CLEARANCE<br>F | LENGTH<br>L | FLANGE HEIGHT<br>A |    |                       |                      |           |
| 2216S3B          | 6         | 0.146               | 0.335             | 0.283               | 0.768       | 0.059              | Y  | 1000                  | 3H2216               | YHM226    |
| 2216S4B          | 8         | 0.169               | 0.295             | 0.201               | 0.551       | 0.059              | Y  | 1000                  | 3H2216               | YHM226    |
| 2216S5B          | 10        | 0.209               | 0.295             | 0.201               | 0.551       | 0.059              | Y  | 1000                  | 3H2216               | YHM226    |

### 1614 AWG Non-Insulated Flanged Spade

**Material:** Tin Plated Copper with Brazed Seam

**Maximum Electrical Current:** 30 Amps

**Material Thickness (T):** .031

**Barrel ID (d1):** .091

**Barrel OD (D):** .161

**Barrel Length (E):** .189

| HOFFMAN PART NO. | STUD SIZE | DIMENSIONS (INCHES) |                   |                     |             |                    | UL | TAPE MOUNTED REEL QTY | DIE FOR TAPE MOUNTED | HAND TOOL |
|------------------|-----------|---------------------|-------------------|---------------------|-------------|--------------------|----|-----------------------|----------------------|-----------|
|                  |           | STUD DIAMETER<br>d2 | TONGUE WIDTH<br>W | STUD CLEARANCE<br>F | LENGTH<br>L | FLANGE HEIGHT<br>A |    |                       |                      |           |
| 1614S3B          | 6         | 0.146               | 0.335             | 0.283               | 0.709       | 0.059              | Y  | 1000                  | 3H2216               | YHM226    |
| 1614S4B          | 8         | 0.169               | 0.335             | 0.283               | 0.709       | 0.059              | Y  | 1000                  | 3H2216               | YHM226    |
| 1614S5B          | 10        | 0.209               | 0.335             | 0.283               | 0.709       | 0.059              | Y  | 1000                  | 3H2216               | YHM226    |

### 1210 AWG Non-Insulated Flanged Spade

**Material:** Tin Plated Copper with Brazed Seam

**Maximum Electrical Current:** 50 Amps

**Material Thickness (T):** .039

**Barrel ID (d1):** .134

**Barrel OD (D):** .220

**Barrel Length (E):** .236

| HOFFMAN PART NO. | STUD SIZE | DIMENSIONS (INCHES) |                   |                     |             |                    | UL | TAPE MOUNTED REEL QTY | DIE FOR TAPE MOUNTED | HAND TOOL |
|------------------|-----------|---------------------|-------------------|---------------------|-------------|--------------------|----|-----------------------|----------------------|-----------|
|                  |           | STUD DIAMETER<br>d2 | TONGUE WIDTH<br>W | STUD CLEARANCE<br>F | LENGTH<br>L | FLANGE HEIGHT<br>A |    |                       |                      |           |
| 1210S3B          | 6         | 0.146               | 0.299             | 0.244               | 0.728       | 0.059              | Y  | 1000                  | 3H1210               | YHM226    |
| 1210S4B          | 8         | 0.169               | 0.299             | 0.244               | 0.728       | 0.059              | Y  | 1000                  | 3H1210               | YHM226    |
| 1210S5B          | 10        | 0.209               | 0.299             | 0.244               | 0.728       | 0.059              | Y  | 1000                  | 3H1210               | YHM226    |

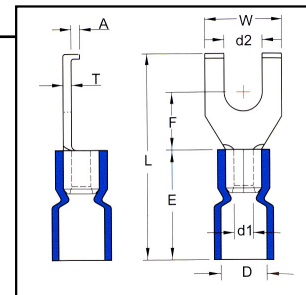


## Vinyl Insulated Flanged Spade Terminals

### 2216 AWG Vinyl Insulated Flanged Spade

**Material:** Tin Plated Copper with Butted Seam  
**Insulation Material:** Red PVC Vinyl  
**Maximum Electrical Current:** 18 Amps  
**Maximum Electrical Rating:** 75°C, 600V  
**Material Thickness (T):** .030

**Barrel ID (d1):** .067  
**Barrel OD (D):** .157  
**Barrel Length (E):** .441    **J Type:** .394



| HOFFMAN PART NO. | STUD SIZE | DIMENSIONS (INCHES) |              |                |        |               | UL | TAPE MOUNTED REEL QTY | DIE FOR TAPE MOUNTED | HAND TOOL |
|------------------|-----------|---------------------|--------------|----------------|--------|---------------|----|-----------------------|----------------------|-----------|
|                  |           | STUD DIAMETER       | TONGUE WIDTH | STUD CLEARANCE | LENGTH | FLANGE HEIGHT |    |                       |                      |           |
|                  |           | d2                  | W            | F              | L      | A             |    |                       |                      |           |
| FVL2216S3BR2/J   | 6         | 0.146               | 0.295        | 0.201          | 0.752  | 0.059         | Y  | 1000                  | 3V2216               | YNT2216   |
| FVL2216S3BR      | 6         | 0.146               | 0.295        | 0.201          | 0.795  | 0.059         | Y  | 1000                  | 3V2216               | YNM2210   |
| FVL2216S4BR2/J   | 8         | 0.169               | 0.295        | 0.201          | 0.752  | 0.059         | Y  | 1000                  | 3V2216               | YNT2216   |
| FVL2216S4BR2     | 8         | 0.169               | 0.295        | 0.201          | 0.795  | 0.059         | Y  | 1000                  | 3V2216               | YNM2210   |
| FVL2216S5BR2/J   | 10        | 0.209               | 0.295        | 0.201          | 0.752  | 0.059         | Y  | 1000                  | 3V2216               | YNT2216   |
| FVL2216S5BR2     | 10        | 0.209               | 0.295        | 0.201          | 0.795  | 0.059         | Y  | 1000                  | 3V2216               | YNM2210   |

### 1614 AWG Vinyl Insulated Flanged Spade

**Material:** Tin Plated Copper with Butted Seam  
**Insulation Material:** Blue PVC Vinyl  
**Maximum Electrical Current:** 50 Amps  
**Maximum Electrical Rating:** 75°C, 600V  
**Material Thickness (T):** .031

**Barrel ID (d1):** .091  
**Barrel OD (D):** .177    **J Type:** .177  
**Barrel Length (E):** .453    **J Type:** .394

| HOFFMAN PART NO. | STUD SIZE | DIMENSIONS (INCHES) |              |                |        |               | UL | TAPE MOUNTED REEL QTY | DIE FOR TAPE MOUNTED | HAND TOOL |
|------------------|-----------|---------------------|--------------|----------------|--------|---------------|----|-----------------------|----------------------|-----------|
|                  |           | STUD DIAMETER       | TONGUE WIDTH | STUD CLEARANCE | LENGTH | FLANGE HEIGHT |    |                       |                      |           |
|                  |           | d2                  | W            | F              | L      | A             |    |                       |                      |           |
| FVL1614S3BR2/J   | 6         | 0.146               | 0.335        | 0.283          | 0.819  | 0.059         | Y  | 1000                  | 3V1614               | YNT1614   |
| FVL1614S3BR2     | 6         | 0.146               | 0.335        | 0.283          | 0.965  | 0.059         | Y  | 1000                  | 3V1614               | YNM2210   |
| FVL1614S4BR2/J   | 8         | 0.169               | 0.335        | 0.283          | 0.819  | 0.059         | Y  | 1000                  | 3V1614               | YNT1614   |
| FVL1614S4BR2     | 8         | 0.169               | 0.335        | 0.283          | 0.965  | 0.059         | Y  | 1000                  | 3V1614               | YNM2210   |
| FVL1614S5BR2/J   | 10        | 0.209               | 0.335        | 0.283          | 0.819  | 0.059         | Y  | 1000                  | 3V1614               | YNT1614   |
| FVL1614S5BR2     | 10        | 0.209               | 0.335        | 0.283          | 0.965  | 0.059         | Y  | 1000                  | 3V1614               | YNM2210   |



**1210 AWG Vinyl Insulated Flanged Spade**

**Material:** Tin Plated Copper with Butted Seam

**Insulation Material:** Yellow PVC Vinyl

**Maximum Electrical Current:** 50 Amps

**Maximum Electrical Rating:** 75°C, 600V

**Material Thickness (T):** .039

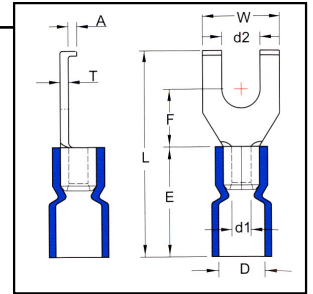
**Barrel ID (d1):** .134

**Barrel OD (D):** .248

**Barrel Length (E):** .555

**J Type:** .268

**J Type:** .551



| HOFFMAN PART NO. | STUD SIZE | DIMENSIONS (INCHES) |              |                |        |               |   | UL   | TAPE MOUNTED REEL QTY | DIE FOR TAPE MOUNTED | HAND TOOL |
|------------------|-----------|---------------------|--------------|----------------|--------|---------------|---|------|-----------------------|----------------------|-----------|
|                  |           | STUD DIAMETER       | TONGUE WIDTH | STUD CLEARANCE | LENGTH | FLANGE HEIGHT |   |      |                       |                      |           |
|                  |           | d2                  | W            | F              | L      | A             |   |      |                       |                      |           |
| FVL1210S3BR2     | 6         | 0.146               | 0.299        | 0.244          | 1.047  | 0.059         | Y | 1000 | 3V1210                | YNM2210              |           |
| FVL1210S3BR2/J   | 6         | 0.146               | 0.299        | 0.244          | 0.992  | 0.059         | Y | 1000 | 3V1210                | YNT1210S             |           |
| FVL1210S4BR2     | 8         | 0.169               | 0.299        | 0.244          | 1.047  | 0.059         | Y | 1000 | 3V1210                | YNM2210              |           |
| FVL1210S4BR2/J   | 8         | 0.169               | 0.299        | 0.244          | 0.992  | 0.059         | Y | 1000 | 3V1210                | YNT1210S             |           |
| FVL1210S5BR2     | 10        | 0.209               | 0.299        | 0.244          | 1.047  | 0.059         | Y | 1000 | 3V1210                | YNM2210              |           |
| FVL1210S5BR2/J   | 10        | 0.209               | 0.299        | 0.244          | 0.992  | 0.059         | Y | 1000 | 3V1210                | YNT1210S             |           |

**Vinyl Insulated Flanged Spade Terminal with Copper Support Sleeve**

**2216 AWG Vinyl Insulated Flanged Spade with Copper Support Sleeve**

**Material:** Tin Plated Copper with Butted Seam

**Insulation Material:** Red PVC Vinyl with Funnel Entry Copper Support Sleeve

**Maximum Electrical Current:** 18 Amps

**Maximum Electrical Rating:** 75°C, 600V

**Material Thickness (T):** .030

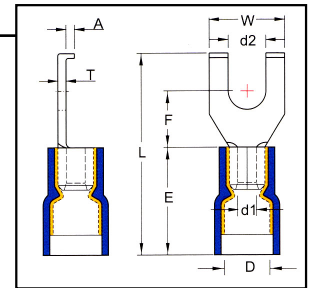
**Barrel ID (d1):** .067

**Barrel OD (D):** .165

**Barrel Length (E):** .413

**J Type:** .157

**J Type:** .378



| HOFFMAN PART NO. | STUD SIZE | DIMENSIONS (INCHES) |              |                |        |               |   | UL   | TAPE MOUNTED REEL QTY | DIE FOR TAPE MOUNTED | HAND TOOL |
|------------------|-----------|---------------------|--------------|----------------|--------|---------------|---|------|-----------------------|----------------------|-----------|
|                  |           | STUD DIAMETER       | TONGUE WIDTH | STUD CLEARANCE | LENGTH | FLANGE HEIGHT |   |      |                       |                      |           |
|                  |           | d2                  | W            | F              | L      | A             |   |      |                       |                      |           |
| FVD2216S3B/J     | 6         | 0.146               | 0.295        | 0.201          | 0.705  | 0.059         | Y | 1000 | 3V2216                | YNT2216              |           |
| FVD2216S3B       | 6         | 0.146               | 0.295        | 0.201          | 0.768  | 0.059         | Y | 1000 | 3V2216                | YNM2210D             |           |
| FVD2216S4B/J     | 8         | 0.169               | 0.295        | 0.201          | 0.705  | 0.059         | Y | 1000 | 3V2216                | YNT2216              |           |
| FVD2216S4B       | 8         | 0.169               | 0.295        | 0.201          | 0.768  | 0.059         | Y | 1000 | 3V2216                | YNM2210D             |           |
| FVD2216S5B/J     | 10        | 0.209               | 0.295        | 0.201          | 0.705  | 0.059         | Y | 1000 | 3V2216                | YNT2216              |           |
| FVD2216S5B       | 10        | 0.209               | 0.295        | 0.201          | 0.768  | 0.059         | Y | 1000 | 3V2216                | YNM2210D             |           |



## 1614 AWG Vinyl Insulated Flanged Spade with Copper Support Sleeve

**Material:** Tin Plated Copper with Butted Seam

**Insulation Material:** Blue PVC Vinyl with Funnel Entry Copper Support Sleeve

**Maximum Electrical Current:** 30 Amps

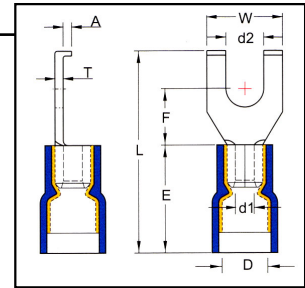
**Barrel ID (d1):** .091

**Maximum Electrical Rating:** 75°C, 600V

**Barrel OD (D):** .197     **J Type:** .185

**Material Thickness (T):** .031

**Barrel Length (E):** .413     **J Type:** .378



| HOFFMAN PART NO. | STUD SIZE | DIMENSIONS (INCHES) |              |                |        |               | UL | TAPE MOUNTED REEL QTY | DIE FOR TAPE MOUNTED | HAND TOOL |
|------------------|-----------|---------------------|--------------|----------------|--------|---------------|----|-----------------------|----------------------|-----------|
|                  |           | STUD DIAMETER       | TONGUE WIDTH | STUD CLEARANCE | LENGTH | FLANGE HEIGHT |    |                       |                      |           |
|                  |           | d2                  | W            | F              | L      | A             |    |                       |                      |           |
| FVD1614S3B       | 6         | 0.146               | 0.335        | 0.283          | 0.925  | 0.059         | Y  | 1000                  | 3V1614               | YNM2210D  |
| FVD1614S3B/J     | 6         | 0.146               | 0.335        | 0.283          | 0.772  | 0.059         | Y  | 1000                  | 3V1614               | YNT1614   |
| FVD1614S4B       | 8         | 0.169               | 0.335        | 0.283          | 0.925  | 0.059         | Y  | 1000                  | 3V1614               | YNM2210D  |
| FVD1614S4B/J     | 8         | 0.169               | 0.335        | 0.283          | 0.772  | 0.059         | Y  | 1000                  | 3V1614               | YNT1614   |
| FVD1614S5B       | 10        | 0.209               | 0.335        | 0.283          | 0.925  | 0.059         | Y  | 1000                  | 3V1614               | YNM2210D  |
| FVD1614S5B/J     | 10        | 0.209               | 0.335        | 0.283          | 0.772  | 0.059         | Y  | 1000                  | 3V1614               | YNT1614   |

## 1210 AWG Vinyl Insulated Flanged Spade with Copper Support Sleeve

**Material:** Tin Plated Copper with Butted Seam

**Insulation Material:** Yellow PVC Vinyl with Funnel Entry Copper Support Sleeve

**Maximum Electrical Current:** 50 Amps

**Barrel ID (d1):** .134

**Maximum Electrical Rating:** 75°C, 600V

**Barrel OD (D):** .268     **J Type:** .256

**Material Thickness (T):** .039

**Barrel Length (E):** .531     **J Type:** .551

| HOFFMAN PART NO. | STUD SIZE | DIMENSIONS (INCHES) |              |                |        |               | UL | TAPE MOUNTED REEL QTY | DIE FOR TAPE MOUNTED | HAND TOOL |
|------------------|-----------|---------------------|--------------|----------------|--------|---------------|----|-----------------------|----------------------|-----------|
|                  |           | STUD DIAMETER       | TONGUE WIDTH | STUD CLEARANCE | LENGTH | FLANGE HEIGHT |    |                       |                      |           |
|                  |           | d2                  | W            | F              | L      | A             |    |                       |                      |           |
| FVD1210S3B       | 6         | 0.146               | 0.299        | 0.244          | 1.024  | 0.059         | Y  | 1000                  | 3V1210               | YNM2210D  |
| FVD1210S3B/J     | 6         | 0.146               | 0.299        | 0.244          | 0.992  | 0.059         | Y  | 1000                  | 3V1210               | YNT1210S  |
| FVD1210S4B       | 8         | 0.169               | 0.299        | 0.244          | 1.024  | 0.059         | Y  | 1000                  | 3V1210               | YNM2210D  |
| FVD1210S4B/J     | 8         | 0.169               | 0.299        | 0.244          | 0.992  | 0.059         | Y  | 1000                  | 3V1210               | YNT1210S  |
| FVD1210S5B       | 10        | 0.209               | 0.335        | 0.295          | 1.083  | 0.059         | Y  | 1000                  | 3V1210               | YNM2210D  |
| FVD1210S5B/J     | 10        | 0.209               | 0.299        | 0.244          | 0.992  | 0.059         | Y  | 1000                  | 3V1210               | YNT1210S  |

# Nylon Insulated Flanged Spade Terminal with Support Sleeve

## 2216 AWG Nylon Insulated Flanged Spade with Copper Support Sleeve

**Material:** Tin Plated Copper with Butted Seam

**Insulation Material:** Red 6/6 Nylon with Funnel Entry Copper Support Sleeve

**Maximum Electrical Current:** 18 Amps

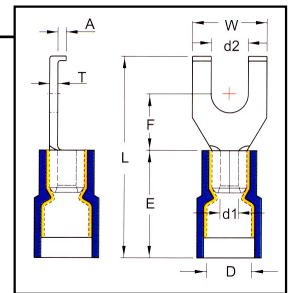
**Maximum Electrical Rating:** 75°C, 600V

**Material Thickness:** (T) .030

**Barrel ID (d1):** .067

**Barrel OD (D):** .177 **J Type:** .157

**Barrel Length (E):** .433 **J Type:** .378



| HOFFMAN PART NO. | STUD SIZE | DIMENSIONS (INCHES) |              |                |        |               | UL | TAPE MOUNTED REEL QTY | DIE FOR TAPE MOUNTED | HAND TOOL |
|------------------|-----------|---------------------|--------------|----------------|--------|---------------|----|-----------------------|----------------------|-----------|
|                  |           | STUD DIAMETER       | TONGUE WIDTH | STUD CLEARANCE | LENGTH | FLANGE HEIGHT |    |                       |                      |           |
|                  |           | d2                  | W            | F              | L      | A             |    |                       |                      |           |
| FND2216S3B       | 6         | 0.146               | 0.295        | 0.201          | 0.787  | 0.059         | Y  | 1000                  | 3V2216               | YNM2210D  |
| FND2216S3B/J     | 6         | 0.146               | 0.295        | 0.201          | 0.705  | 0.059         | Y  | 1000                  | 3V2216               | YNT2216   |
| FND2216S4B       | 8         | 0.169               | 0.295        | 0.201          | 0.787  | 0.059         | Y  | 1000                  | 3V2216               | YNM2210D  |
| FND2216S4B/J     | 8         | 0.169               | 0.295        | 0.201          | 0.705  | 0.059         | Y  | 1000                  | 3V2216               | YNT2216   |
| FND2216S5B       | 10        | 0.209               | 0.295        | 0.201          | 0.787  | 0.059         | Y  | 1000                  | 3V2216               | YNM2210D  |
| FND2216S5B/J     | 10        | 0.209               | 0.295        | 0.201          | 0.705  | 0.059         | Y  | 1000                  | 3V2216               | YNT2216   |

## 1614 AWG Nylon Insulated Flanged Spade with Copper Support Sleeve

**Material:** Tin Plated Copper with Butted Seam

**Insulation Material:** Blue 6/6 Nylon with Funnel Entry Copper Support Sleeve

**Maximum Electrical Current:** 30 Amps

**Maximum Electrical Rating:** 75°C, 600V

**Material Thickness (T):** .031

**Barrel ID (d1):** .091

**Barrel OD (D):** .205 **J Type:** .185

**Barrel Length (E):** .433 **J Type:** .378

| HOFFMAN PART NO. | STUD SIZE | DIMENSIONS (INCHES) |              |                |        |               | UL | TAPE MOUNTED REEL QTY | DIE FOR TAPE MOUNTED | HAND TOOL |
|------------------|-----------|---------------------|--------------|----------------|--------|---------------|----|-----------------------|----------------------|-----------|
|                  |           | STUD DIAMETER       | TONGUE WIDTH | STUD CLEARANCE | LENGTH | FLANGE HEIGHT |    |                       |                      |           |
|                  |           | d2                  | W            | F              | L      | A             |    |                       |                      |           |
| FND1614S3B       | 6         | 0.146               | 0.295        | 0.205          | 0.807  | 0.059         | Y  | 1000                  | 3V1614               | YNM2210D  |
| FND1614S3B/J     | 6         | 0.146               | 0.295        | 0.201          | 0.705  | 0.059         | Y  | 1000                  | 3V2216               | YNT2216   |
| FND1614S4B/J     | 8         | 0.169               | 0.295        | 0.201          | 0.705  | 0.059         | Y  | 1000                  | 3V2216               | YNT2216   |
| FND1614S4B       | 8         | 0.169               | 0.295        | 0.205          | 0.807  | 0.059         | Y  | 1000                  | 3V1614               | YNM2210D  |
| FND1614S5B       | 10        | 0.209               | 0.295        | 0.205          | 0.807  | 0.059         | Y  | 1000                  | 3V1614               | YNM2210D  |
| FND1614S5B/J     | 10        | 0.209               | 0.295        | 0.201          | 0.705  | 0.059         | Y  | 1000                  | 3V2216               | YNT2216   |



## 1210 AWG Nylon Insulated Flanged Spade with Copper Support Sleeve

**Material:** Tin Plated Copper with Butted Seam

**Insulation Material:** Yellow 6/6 Nylon with Funnel Entry Copper Support Sleeve

**Maximum Electrical Current:** 50 Amps

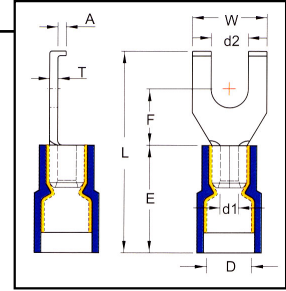
**Maximum Electrical Rating:** 75°C, 600V

**Material Thickness (T):** .039

**Barrel ID (d1):** .134

**Barrel OD (D):** .276     **J Type:** .157

**Barrel Length (E):** .512     **J Type:** .378



| HOFFMAN PART NO. | STUD SIZE | DIMENSIONS (INCHES) |              |                |        |               |   | UL   | TAPE MOUNTED REEL QTY | DIE FOR TAPE MOUNTED | HAND TOOL |
|------------------|-----------|---------------------|--------------|----------------|--------|---------------|---|------|-----------------------|----------------------|-----------|
|                  |           | STUD DIAMETER       | TONGUE WIDTH | STUD CLEARANCE | LENGTH | FLANGE HEIGHT |   |      |                       |                      |           |
|                  |           | d2                  | W            | F              | L      | A             |   |      |                       |                      |           |
| FND1210S3B       | 6         | 0.146               | 0.335        | 0.295          | 1.063  | 0.059         | Y | 1000 | 3V1210                | YNM2210D             |           |
| FND1210S3B/J     | 6         | 0.146               | 0.299        | 0.244          | 0.992  | 0.059         | Y | 1000 | 3V1210                | YNT1210S             |           |
| FND1210S4B       | 8         | 0.169               | 0.335        | 0.295          | 1.063  | 0.059         | Y | 1000 | 3V1210                | YNM2210D             |           |
| FND1210S4B/J     | 8         | 0.169               | 0.299        | 0.244          | 0.992  | 0.059         | Y | 1000 | 3V1210                | YNT1210S             |           |
| FND1210S5B       | 10        | 0.209               | 0.335        | 0.295          | 1.063  | 0.059         | Y | 1000 | 3V1210                | YNM2210D             |           |
| FND1210S5B/J     | 10        | 0.209               | 0.299        | 0.244          | 0.992  | 0.059         | Y | 1000 | 3V1210                | YNT1210S             |           |

**[Click Here for Hand Tools](#)**  
(Crimping Tools Section - page 96)





## Non-Insulated Locking Spade Terminals

### 2216 AWG Non-Insulated Locking Spade

**Material:** Tin Plated Copper with Brazed Seam

**Maximum Electrical Current:** 19 Amps

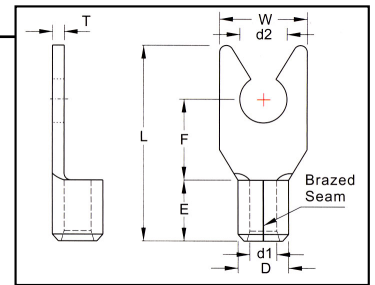
**Maximum Electrical Rating:** 176°C

**Material Thickness:** .030

**Barrel ID (d1):** .067

**Barrel OD (D):** .134

**Barrel Length (E):** .189



| HOFFMAN PART NO. | STUD SIZE | DIMENSIONS (INCHES) |                |                  |          | UL | TAPE MOUNTED REEL QTY | DIE FOR TAPE MOUNTED | HAND TOOL  |
|------------------|-----------|---------------------|----------------|------------------|----------|----|-----------------------|----------------------|------------|
|                  |           | STUD DIAMETER d2    | TONGUE WIDTH W | STUD CLEARANCE F | LENGTH L |    |                       |                      |            |
| WS22163LST       | 6         | 0.146               | 0.252          | 0.256            | 0.63     | Y  | 1000                  | 3H2216               | YHM228     |
| WS22164LST       | 8         | 0.169               | 0.319          | 0.256            | 0.63     | Y  | 1000                  | 3H2216               | or         |
| WS22165LST       | 10        | 0.209               | 0.319          | 0.256            | 0.63     | Y  | 1000                  | 3H2216               | IZUMI 5N18 |

### 1614 AWG Non-Insulated Locking Spade

**Material:** Tin Plated Copper with Brazed Seam

**Maximum Electrical Current:** 27 Amps

**Maximum Electrical Rating:** 176°C

**Material Thickness:** .031

**Barrel ID (d1):** .091

**Barrel OD (D):** .161

**Barrel Length (E):** .189

| HOFFMAN PART NO. | STUD SIZE | DIMENSIONS (INCHES) |                |                  |          | UL | TAPE MOUNTED REEL QTY | DIE FOR TAPE MOUNTED | HAND TOOL  |
|------------------|-----------|---------------------|----------------|------------------|----------|----|-----------------------|----------------------|------------|
|                  |           | STUD DIAMETER d2    | TONGUE WIDTH W | STUD CLEARANCE F | LENGTH L |    |                       |                      |            |
| WS16143LST       | 6         | 0.146               | 0.236          | 0.256            | 0.63     | Y  | 1000                  | 3H1614               | YHM228     |
| WS16144LST       | 8         | 0.169               | 0.319          | 0.256            | 0.63     | Y  | 1000                  | 3H1614               | or         |
| WS16145LST       | 10        | 0.209               | 0.319          | 0.256            | 0.63     | Y  | 1000                  | 3H1614               | IZUMI 5N18 |

### 1210 AWG Non-Insulated Locking Spade

**Material:** Tin Plated Copper with Brazed Seam

**Maximum Electrical Current:** 48 Amps

**Maximum Electrical Rating:** 176°C

**Material Thickness:** .039

**Barrel ID (d1):** .134

**Barrel OD (D):** .220

**Barrel Length (E):** .236

| HOFFMAN PART NO. | STUD SIZE | DIMENSIONS (INCHES) |                |                  |          | UL | TAPE MOUNTED REEL QTY | DIE FOR TAPE MOUNTED | HAND TOOL  |
|------------------|-----------|---------------------|----------------|------------------|----------|----|-----------------------|----------------------|------------|
|                  |           | STUD DIAMETER d2    | TONGUE WIDTH W | STUD CLEARANCE F | LENGTH L |    |                       |                      |            |
| WS12103LST       | 6         | 0.146               | 0.327          | 0.276            | 0.717    | Y  | 1000                  | 3H1210               | YHM228     |
| WS12104LST       | 8         | 0.169               | 0.327          | 0.276            | 0.717    | Y  | 1000                  | 3H1210               | or         |
| WS12105LST       | 10        | 0.209               | 0.354          | 0.276            | 0.717    | Y  | 1000                  | 3H1210               | IZUMI 5N18 |

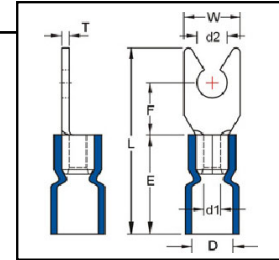


## Vinyl Insulated Locking Spade Terminals

### 2216 AWG PVC Vinyl Insulated Locking Spade

**Material:** Tin Plated Copper with Butted Seam  
**Insulation Material:** Red PVC Vinyl with Funnel Entry  
**Maximum Electrical Current:** 19 Amps  
**Maximum Electrical Rating:** 75°C, 600V  
**Material Thickness:** .030

**Barrel ID (d1):** .067  
**Max Insulation (D):** .134  
**Barrel Length (E):** .189



| HOFFMAN PART NO. | STUD SIZE | DIMENSIONS (INCHES) |                   |                     |             | UL | TAPE MOUNTED REEL QTY | DIE FOR TAPE MOUNTED | HAND TOOL |
|------------------|-----------|---------------------|-------------------|---------------------|-------------|----|-----------------------|----------------------|-----------|
|                  |           | STUD DIAMETER<br>d2 | TONGUE WIDTH<br>W | STUD CLEARANCE<br>F | LENGTH<br>L |    |                       |                      |           |
| FVL22163LSR2     | 6         | 0.146               | 0.252             | 0.256               | 0.874       | Y  | 1000                  | 3V2216               | YNM2210   |
| FVL22164LSR2     | 8         | 0.169               | 0.314             | 0.256               | 0.874       | Y  | 1000                  | 3V2216               | or        |
| FVL22165LSR2     | 10        | 0.209               | 0.374             | 0.256               | 0.874       | Y  | 1000                  | 3V2216               | IZUMI #34 |

### 1614 AWG PVC Vinyl Insulated Locking Spade

**Material:** Tin Plated Copper with Butted Seam  
**Insulation Material:** Blue PVC Vinyl with Funnel Entry  
**Maximum Electrical Current:** 27 Amps  
**Maximum Electrical Rating:** 75°C, 600V  
**Material Thickness:** .031

**Barrel ID (d1):** .091  
**Max Insulation (D):** .161  
**Barrel Length (E):** .189

| HOFFMAN PART NO. | STUD SIZE | DIMENSIONS (INCHES) |                   |                     |             | UL | TAPE MOUNTED REEL QTY | DIE FOR TAPE MOUNTED | HAND TOOL |
|------------------|-----------|---------------------|-------------------|---------------------|-------------|----|-----------------------|----------------------|-----------|
|                  |           | STUD DIAMETER<br>d2 | TONGUE WIDTH<br>W | STUD CLEARANCE<br>F | LENGTH<br>L |    |                       |                      |           |
| FVL16143LSR2     | 6         | 0.146               | 0.236             | 0.256               | 0.886       | Y  | 1000                  | 3V1614               | YNM2210   |
| FVL16144LSR2     | 8         | 0.169               | 0.319             | 0.256               | 0.886       | Y  | 1000                  | 3V1614               | or        |
| FVL16145LSR2     | 10        | 0.209               | 0.319             | 0.256               | 0.886       | Y  | 1000                  | 3V1614               | IZUMI #34 |

### 1210 AWG PVC Vinyl Insulated Locking Spade

**Material:** Tin Plated Copper with Butted Seam  
**Insulation Material:** Yellow PVC Vinyl with Funnel Entry  
**Maximum Electrical Current:** 48 Amps  
**Maximum Electrical Rating:** 75°C, 600V  
**Material Thickness:** .031

**Barrel ID (d1):** .134  
**Max Insulation (D):** .248  
**Barrel Length (E):** 236

| HOFFMAN PART NO. | STUD SIZE | DIMENSIONS (INCHES) |                   |                     |             | UL | TAPE MOUNTED REEL QTY | DIE FOR TAPE MOUNTED | HAND TOOL |
|------------------|-----------|---------------------|-------------------|---------------------|-------------|----|-----------------------|----------------------|-----------|
|                  |           | STUD DIAMETER<br>d2 | TONGUE WIDTH<br>W | STUD CLEARANCE<br>F | LENGTH<br>L |    |                       |                      |           |
| FVL12103LSR2     | 6         | 0.146               | 0.327             | 0.276               | 1.035       | Y  | 1000                  | 3V1210               | YNM2210   |
| FVL12104LSR2     | 8         | 0.169               | 0.327             | 0.276               | 1.035       | Y  | 1000                  | 3V1210               | or        |
| FVL12105LSR2     | 10        | 0.209               | 0.354             | 0.276               | 1.035       | Y  | 1000                  | 3V1210               | IZUMI #5  |



# Vinyl Insulated Locking Spade Terminals with Copper Support Sleeve

## 2216 AWG Vinyl Insulated Locking Spade with Copper Support Sleeve

**Material:** Tin Plated Copper with Butted Seam

**Insulation Material:** Red Vinyl with Funnel Entry Copper Support Sleeve

**Maximum Electrical Current:** 19 Amps

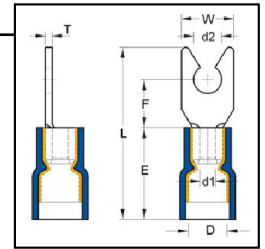
**Barrel ID (d1):** .067

**Maximum Electrical Rating:** 75°C, 600V

**Max Insulation (D):** .165

**Material Thickness:** .030

**Barrel Length (E):** .189



| HOFFMAN PART NO. | STUD SIZE | DIMENSIONS (INCHES) |                |                  |          | UL | TAPE MOUNTED REEL QTY | DIE FOR TAPE MOUNTED | HAND TOOL  |
|------------------|-----------|---------------------|----------------|------------------|----------|----|-----------------------|----------------------|------------|
|                  |           | STUD DIAMETER d2    | TONGUE WIDTH W | STUD CLEARANCE F | LENGTH L |    |                       |                      |            |
| FVD22163LST      | 6         | 0.146               | 0.252          | 0.256            | 0.846    | Y  | 1000                  | 3V2216D              | YNM2210D   |
| FVD22164LST      | 8         | 0.169               | 0.319          | 0.256            | 0.846    | Y  | 1000                  | 3V2216D              | or         |
| FVD22165LST      | 10        | 0.209               | 0.319          | 0.256            | 0.846    | Y  | 1000                  | 3V2216D              | IZUMI # 34 |

## 1614 AWG Vinyl Insulated Locking Spade with Copper Support Sleeve

**Material:** Tin Plated Copper with Butted Seam

**Insulation Material:** Blue Vinyl with Funnel Entry Copper Support Sleeve

**Maximum Electrical Current:** 27 Amps

**Barrel ID (d1):** 0.09

**Maximum Electrical Rating:** 75°C, 600V

**Max Insulation (D):** 0.197

**Material Thickness:** 0.031

**Barrel Length (E):** .189

| HOFFMAN PART NO. | STUD SIZE | DIMENSIONS (INCHES) |                |                  |          | UL | TAPE MOUNTED REEL QTY | DIE FOR TAPE MOUNTED | HAND TOOL  |
|------------------|-----------|---------------------|----------------|------------------|----------|----|-----------------------|----------------------|------------|
|                  |           | STUD DIAMETER d2    | TONGUE WIDTH W | STUD CLEARANCE F | LENGTH L |    |                       |                      |            |
| FVD16143LST      | 6         | 0.146               | 0.236          | 0.256            | 0.846    | Y  | 1000                  | 3V1613D              | YNM2210D   |
| FVD16144LST      | 8         | 0.169               | 0.319          | 0.256            | 0.846    | Y  | 1000                  | 3V1613D              | or         |
| FVD16145LST      | 10        | 0.209               | 0.319          | 0.256            | 0.846    | Y  | 1000                  | 3V1613D              | Izumi # 34 |

## 1210 AWG Vinyl Insulated Locking Spade with Copper Support Sleeve

**Material:** Tin Plated Copper with Butted Seam

**Insulation Material:** Yellow Vinyl with Funnel Entry Copper Support Sleeve

**Maximum Electrical Current:** 48 Amps

**Barrel ID (d1):** .134

**Maximum Electrical Rating:** 75°C, 600V

**Max Insulation (D):** .276

**Material Thickness:** .039

**Barrel Length (E):** .512

| HOFFMAN PART NO. | STUD SIZE | DIMENSIONS (INCHES) |                |                  |          | UL | TAPE MOUNTED REEL QTY | DIE FOR TAPE MOUNTED | HAND TOOL |
|------------------|-----------|---------------------|----------------|------------------|----------|----|-----------------------|----------------------|-----------|
|                  |           | STUD DIAMETER d2    | TONGUE WIDTH W | STUD CLEARANCE F | LENGTH L |    |                       |                      |           |
| FVD12103LST      | 6         | 0.146               | .327           | .276             | 1.012    | Y  | 500                   | 3V1210D              | YNM2210D  |
| FVD12104LST      | 8         | 0.169               | .327           | .276             | 1.012    | Y  | 500                   | 3V1210D              | or        |
| FVD12105LST      | 10        | 0.209               | .354           | .276             | 1.012    | Y  | 500                   | 3V1210D              | Izumi #5  |



## Nylon Insulated Locking Spade Terminals with Copper Support Sleeve

### 2216 AWG Nylon Insulated Locking Spade with Copper Support Sleeve

**Material:** Tin Plated Copper with Butted Seam

**Insulation Material:** Red 6/6 Nylon with Funnel Entry Copper Support Sleeve

**Maximum Electrical Current:** 19 Amps

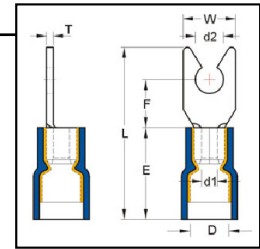
**Barrel ID (d1):** .067

**Maximum Electrical Rating:** 75°C, 600V

**Max Insulation (D):** .177

**Material Thickness:** .030

**Barrel Length (E):** .189



| HOFFMAN PART NO. | STUD SIZE | DIMENSIONS (INCHES) |                |                  |          | UL | TAPE MOUNTED REEL QTY | DIE FOR TAPE MOUNTED | HAND TOOL |
|------------------|-----------|---------------------|----------------|------------------|----------|----|-----------------------|----------------------|-----------|
|                  |           | STUD DIAMETER d2    | TONGUE WIDTH W | STUD CLEARANCE F | LENGTH L |    |                       |                      |           |
| FND22163LSR2     | 6         | 0.146               | 0.252          | 0.256            | 0.866    | Y  | 1000                  | 3V2216D              | YNM2210D  |
| FND22164LSR2     | 8         | 0.169               | 0.319          | 0.256            | 0.866    | Y  | 1000                  | 3V2216D              | or        |
| FND22165LSR2     | 10        | 0.209               | 0.319          | 0.256            | 0.866    | Y  | 1000                  | 3V2216D              | Izumi #34 |

### 1614 AWG Nylon Insulated Locking Spade with Copper Support Sleeve

**Material:** Tin Plated Copper with Butted Seam

**Insulation Material:** Blue 6/6 Nylon with Funnel Entry Copper Support Sleeve

**Maximum Electrical Current:** 27 Amps

**Barrel ID (d1):** 0.091

**Maximum Electrical Rating:** 75°C, 600V

**Max Insulation (D):** 0.205

**Material Thickness:** 0.031

**Barrel Length (E):** .189

| HOFFMAN PART NO. | STUD SIZE | DIMENSIONS (INCHES) |                |                  |          | UL | TAPE MOUNTED REEL QTY | DIE FOR TAPE MOUNTED | HAND TOOL |
|------------------|-----------|---------------------|----------------|------------------|----------|----|-----------------------|----------------------|-----------|
|                  |           | STUD DIAMETER d2    | TONGUE WIDTH W | STUD CLEARANCE F | LENGTH L |    |                       |                      |           |
| FND16143LSR2     | 6         | 0.146               | 0.236          | 0.256            | 0.866    | Y  | 1000                  | 3V1614D              | YNM2210D  |
| FND16144LSR2     | 8         | 0.169               | 0.319          | 0.256            | 0.866    | Y  | 1000                  | 3V1614D              | or        |
| FND16145LSR2     | 10        | 0.209               | 0.319          | 0.256            | 0.866    | Y  | 1000                  | 3V1614D              | Izumi #34 |

### 1210 AWG Nylon Insulated Locking Spade with Copper Support Sleeve

**Material:** Tin Plated Copper with Butted Seam

**Insulation Material:** Yellow 6/6 Nylon with Funnel Entry Copper Support Sleeve

**Maximum Electrical Current:** 48 Amps

**Barrel ID (d1):** .134

**Maximum Electrical Rating:** 75°C, 600V

**Max Insulation (D):** .276

**Material Thickness:** .039

**Barrel Length (E):** .512

| HOFFMAN PART NO. | STUD SIZE | DIMENSIONS (INCHES) |                |                  |          | UL | TAPE MOUNTED REEL QTY | DIE FOR TAPE MOUNTED | HAND TOOL |
|------------------|-----------|---------------------|----------------|------------------|----------|----|-----------------------|----------------------|-----------|
|                  |           | STUD DIAMETER d2    | TONGUE WIDTH W | STUD CLEARANCE F | LENGTH L |    |                       |                      |           |
| FND12103LSR2     | 6         | 0.146               | 0.327          | 0.276            | 0.992    | Y  | 1000                  | 3V1210               | YNM2210D  |
| FND12104LSR2     | 8         | 0.169               | 0.327          | 0.276            | 0.992    | Y  | 1000                  | 3V1210               | or        |
| FND12105LSR2     | 10        | 0.209               | 0.354          | 0.276            | 0.992    | Y  | 1000                  | 3V1210               | Izumi #5  |



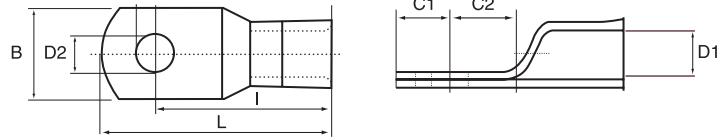
# Non-Plated Tubular Lugs

For Heavy Duty Applications: Trucks, Buses, Forklifts, Automotive, Industrial Equipment

Annealed Terminals for easy crimping

Seamless Barrels for Secure and Accurate Crimp

Made from High Quality Copper : 110 Cu ASTM B152



Lever tool for crimping tubular lugs #115

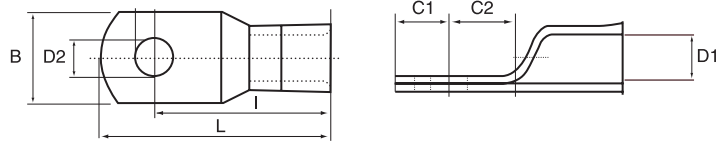
| HOFFMAN PART NO. | WIRE SIZE AWG | STUD SIZE (INCH) | DIMENSIONS (INCHES) |      |      |      |      |      |      |
|------------------|---------------|------------------|---------------------|------|------|------|------|------|------|
|                  |               |                  | D1                  | D2   | B    | C1   | C2   | I    | L    |
| 1700R2           | 8             | 10               | 0.19                | 0.21 | 0.44 | 0.24 | 0.38 | 0.98 | 1.22 |
| 1701R2           | 8             | 1/4              | 0.19                | 0.28 | 0.44 | 0.24 | 0.38 | 0.98 | 1.22 |
| 1702R2           | 8             | 5/16             | 0.19                | 0.34 | 0.44 | 0.24 | 0.38 | 0.98 | 1.22 |
| 1703R2           | 8             | 3/8              | 0.19                | 0.40 | 0.44 | 0.24 | 0.38 | 0.98 | 1.22 |
| 1704R2           | 8             | 1/2              | 0.19                | 0.52 | 0.44 | 0.24 | 0.38 | 0.98 | 1.22 |
| 1600R2           | 6             | 10               | 0.23                | 0.21 | 0.44 | 0.24 | 0.35 | 1.04 | 1.28 |
| 1601R2           | 6             | 1/4              | 0.23                | 0.28 | 0.44 | 0.24 | 0.35 | 1.04 | 1.28 |
| 1602R2           | 6             | 5/16             | 0.23                | 0.34 | 0.44 | 0.24 | 0.35 | 1.04 | 1.28 |
| 1603R2           | 6             | 3/8              | 0.23                | 0.40 | 0.44 | 0.24 | 0.35 | 1.04 | 1.28 |
| 1604R2           | 6             | 1/2              | 0.23                | 0.52 | 0.44 | 0.24 | 0.35 | 1.04 | 0.13 |
| 1590R2           | 4             | 10               | 0.29                | 0.21 | 0.53 | 0.28 | 0.43 | 1.22 | 1.50 |
| 1591R2           | 4             | 1/4              | 0.29                | 0.28 | 0.53 | 0.28 | 0.43 | 1.22 | 1.50 |
| 1592R2           | 4             | 5/16             | 0.29                | 0.34 | 0.53 | 0.28 | 0.43 | 1.22 | 1.50 |
| 1593R2           | 4             | 3/8              | 0.29                | 0.40 | 0.53 | 0.28 | 0.43 | 1.22 | 1.50 |
| 1594R2           | 4             | 1/2              | 0.29                | 0.52 | 0.53 | 0.28 | 0.43 | 1.22 | 1.50 |
| 1580R2           | 2             | 1/4              | 0.33                | 0.28 | 0.62 | 0.33 | 0.43 | 1.31 | 1.63 |
| 1581R2           | 2             | 5/16             | 0.33                | 0.34 | 0.62 | 0.33 | 0.43 | 1.31 | 1.63 |
| 1582R2           | 2             | 3/8              | 0.33                | 0.40 | 0.62 | 0.33 | 0.43 | 1.31 | 1.63 |
| 1583R2           | 2             | 1/2              | 0.33                | 0.52 | 0.62 | 0.33 | 0.43 | 1.31 | 1.63 |
| 1560R2           | 1             | 1/4              | 0.36                | 0.28 | 0.66 | 0.33 | 0.44 | 1.40 | 1.73 |
| 1561R2           | 1             | 5/16             | 0.36                | 0.34 | 0.66 | 0.33 | 0.44 | 1.40 | 1.73 |
| 1562R2           | 1             | 3/8              | 0.36                | 0.40 | 0.66 | 0.33 | 0.44 | 1.40 | 1.73 |
| 1563R2           | 1             | 1/2              | 0.36                | 0.52 | 0.66 | 0.33 | 0.44 | 1.40 | 1.73 |
| 1550R2           | 1/0           | 1/4              | 0.40                | 0.28 | 0.72 | 0.39 | 0.46 | 1.46 | 1.84 |
| 1551R2           | 1/0           | 5/16             | 0.40                | 0.34 | 0.72 | 0.39 | 0.46 | 1.46 | 1.84 |
| 1552R2           | 1/0           | 3/8              | 0.40                | 0.40 | 0.72 | 0.39 | 0.46 | 1.46 | 1.84 |
| 1553R2           | 1/0           | 1/2              | 0.40                | 0.52 | 0.72 | 0.39 | 0.46 | 1.46 | 1.84 |
| 1540R2           | 2/0           | 1/4              | 0.46                | 0.28 | 0.81 | 0.41 | 0.53 | 1.65 | 2.07 |
| 1541R2           | 2/0           | 5/16             | 0.46                | 0.34 | 0.81 | 0.41 | 0.53 | 1.65 | 2.07 |
| 1542R2           | 2/0           | 3/8              | 0.46                | 0.40 | 0.81 | 0.41 | 0.53 | 1.65 | 2.07 |
| 1543R2           | 2/0           | 1/2              | 0.46                | 0.52 | 0.81 | 0.41 | 0.53 | 1.65 | 2.07 |
| 1530R2           | 3/0           | 1/4              | 0.51                | 0.28 | 0.91 | 0.46 | 0.51 | 1.68 | 2.15 |
| 1531R2           | 3/0           | 5/16             | 0.51                | 0.34 | 0.91 | 0.46 | 0.51 | 1.68 | 2.15 |
| 1532R2           | 3/0           | 3/8              | 0.51                | 0.40 | 0.91 | 0.46 | 0.51 | 1.68 | 2.15 |
| 1533R2           | 3/0           | 1/2              | 0.51                | 0.52 | 0.91 | 0.46 | 0.51 | 1.68 | 2.15 |
| 1521R2           | 4/0           | 5/16             | 0.56                | 0.34 | 0.98 | 0.50 | 0.55 | 1.83 | 2.33 |
| 1522R2           | 4/0           | 3/8              | 0.56                | 0.40 | 0.98 | 0.50 | 0.55 | 1.83 | 2.33 |
| 1523R2           | 4/0           | 1/2              | 0.56                | 0.52 | 0.98 | 0.50 | 0.55 | 1.83 | 2.33 |

For tin plated add *T* to the part number, **1521TR2**, for sight hole add *S* to the end of the part number, **1521R2S**.



## UL Certified, Non-Plated Tubular Lugs

Lever tool for crimping tubular lugs #115



| HOFFMAN PART NO. | WIRE SIZE AWG | STUD SIZE (INCH) | DIMENSIONS (INCHES) |       |       |       |       |       |       | UL |
|------------------|---------------|------------------|---------------------|-------|-------|-------|-------|-------|-------|----|
|                  |               |                  | D1                  | D2    | B     | C1    | C2    | I     | L     |    |
| 1700             | 8             | 10               | 0.185               | 0.196 | 0.445 | 0.235 | 0.344 | 0.965 | 1.200 | Y  |
| 1701             | 8             | 1/4              | 0.185               | 0.265 | 0.445 | 0.235 | 0.344 | 0.965 | 1.200 | Y  |
| 1702             | 8             | 5/16             | 0.185               | 0.328 | 0.445 | 0.235 | 0.406 | 0.965 | 1.200 | Y  |
| 1600             | 6             | 10               | 0.232               | 0.196 | 0.445 | 0.235 | 0.344 | 1.175 | 1.410 | Y  |
| 1601             | 6             | 1/4              | 0.232               | 0.265 | 0.445 | 0.235 | 0.344 | 1.175 | 1.410 | Y  |
| 1602             | 6             | 5/16             | 0.232               | 0.328 | 0.445 | 0.235 | 0.406 | 1.175 | 1.410 | Y  |
| 1603             | 6             | 3/8              | 0.232               | 0.390 | 0.765 | 0.395 | 0.406 | 1.155 | 1.550 | Y  |
| 1590             | 4             | 10               | 0.286               | 0.196 | 0.525 | 0.275 | 0.406 | 1.225 | 1.500 | Y  |
| 1591             | 4             | 1/4              | 0.286               | 0.265 | 0.525 | 0.275 | 0.406 | 1.225 | 1.500 | Y  |
| 1592             | 4             | 5/16             | 0.286               | 0.328 | 0.525 | 0.275 | 0.406 | 1.225 | 1.500 | Y  |
| 1593             | 4             | 3/8              | 0.286               | 0.390 | 0.525 | 0.275 | 0.406 | 1.225 | 1.500 | Y  |
| 1580             | 2             | 1/4              | 0.336               | 0.265 | 0.615 | 0.325 | 0.406 | 1.295 | 1.620 | Y  |
| 1581             | 2             | 5/16             | 0.336               | 0.328 | 0.615 | 0.325 | 0.406 | 1.295 | 1.620 | Y  |
| 1582             | 2             | 3/8              | 0.336               | 0.390 | 0.615 | 0.325 | 0.406 | 1.295 | 1.620 | Y  |
| 1583             | 2             | 1/2              | 0.336               | 0.515 | 0.755 | 0.395 | 0.406 | 1.355 | 1.750 | Y  |
| 1560             | 1             | 1/4              | 0.360               | 0.265 | 0.655 | 0.335 | 0.406 | 1.385 | 1.720 | Y  |
| 1561             | 1             | 5/16             | 0.360               | 0.328 | 0.655 | 0.335 | 0.406 | 1.385 | 1.720 | Y  |
| 1562             | 1             | 3/8              | 0.360               | 0.390 | 0.655 | 0.335 | 0.406 | 1.385 | 1.720 | Y  |
| 1563             | 1             | 1/2              | 0.360               | 0.515 | 0.655 | 0.335 | 0.468 | 1.385 | 1.720 | Y  |
| 1550             | 1/0           | 1/4              | 0.407               | 0.265 | 0.725 | 0.385 | 0.406 | 1.445 | 1.830 | Y  |
| 1551             | 1/0           | 5/16             | 0.407               | 0.328 | 0.725 | 0.385 | 0.406 | 1.445 | 1.830 | Y  |
| 1552             | 1/0           | 3/8              | 0.407               | 0.390 | 0.725 | 0.385 | 0.406 | 1.445 | 1.830 | Y  |
| 1553             | 1/0           | 1/2              | 0.407               | 0.515 | 0.725 | 0.385 | 0.406 | 1.445 | 1.830 | Y  |
| 1540             | 2/0           | 1/4              | 0.461               | 0.265 | 0.815 | 0.425 | 0.500 | 1.635 | 2.060 | Y  |
| 1541             | 2/0           | 5/16             | 0.461               | 0.328 | 0.815 | 0.425 | 0.500 | 1.635 | 2.060 | Y  |
| 1542             | 2/0           | 3/8              | 0.461               | 0.390 | 0.815 | 0.425 | 0.500 | 1.635 | 2.060 | Y  |
| 1543             | 2/0           | 1/2              | 0.461               | 0.515 | 0.815 | 0.425 | 0.500 | 1.635 | 2.060 | Y  |
| 1530             | 3/0           | 1/4              | 0.511               | 0.265 | 0.895 | 0.465 | 0.500 | 1.695 | 2.160 | Y  |
| 1531             | 3/0           | 5/16             | 0.511               | 0.328 | 0.895 | 0.465 | 0.500 | 1.695 | 2.160 | Y  |
| 1532             | 3/0           | 3/8              | 0.511               | 0.390 | 0.895 | 0.465 | 0.500 | 1.695 | 2.160 | Y  |
| 1533             | 3/0           | 1/2              | 0.511               | 0.515 | 0.895 | 0.465 | 0.500 | 1.695 | 2.160 | Y  |
| 1521             | 4/0           | 5/16             | 0.559               | 0.328 | 0.985 | 0.505 | 0.546 | 1.845 | 2.350 | Y  |
| 1522             | 4/0           | 3/8              | 0.559               | 0.390 | 0.985 | 0.505 | 0.546 | 1.845 | 2.350 | Y  |
| 1523             | 4/0           | 1/2              | 0.559               | 0.515 | 0.985 | 0.505 | 0.546 | 1.845 | 2.350 | Y  |

For tin plated add **T** at the end of the part number, **1521T**

