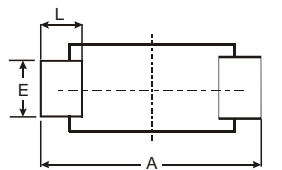
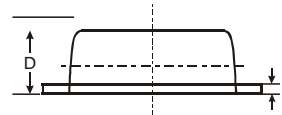
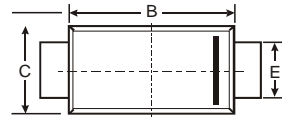


### Features

- Low power loss, high efficiency
- High forward surge current capability
- High temperature soldering guaranteed:  
250°C/10 seconds, 0.375(9.5mm) lead length,  
5 lbs. (2.3kg) tension

### Mechanical Data

- Case: JEDEC SOD-123FL molded plastic body over passivated junction
- Terminals: Plated axial leads,
- solderable per MIL-STD-750, Method 2026
- Polarity: Color band denotes cathode end
- Mounting Position: Any
- Weight: 0.0007 ounce, 0.02 grams



SOD-123FL			
Dim	Min	Max	Typ
A	3.50	3.80	3.65
B	2.60	2.90	2.75
C	1.70	1.90	1.80
D	0.09	1.10	1.00
E	0.08	1.10	0.095
H	0.12	0.20	0.16
L	0.07	0.09	0.08
All Dimensions in mm			

### Maximum Ratings @ T<sub>A</sub> = 25°C unless otherwise specified

Parameter	Symbol	Limits	Unit
Reverse voltage (repetitive peak)	V <sub>RM</sub>	30	V
Reverse voltage (DC)	V <sub>R</sub>	30	V
Average rectified forward current Mounted on epoxy board. 180° Half sine wave	I <sub>o</sub>	1.5	A
Forward current surge peak (60Hz · 1 cyc)	I <sub>FSM</sub>	30	A
Junction temperature	T <sub>j</sub>	150	°C
Storage temperature	T <sub>stg</sub>	-40 to +150	°C

### Electrical characteristics (T<sub>a</sub>=25°C)

Parameter	Symbol	Min.	Typ.	Max.	Unit	Conditions
Forward voltage	V <sub>F1</sub>	-	0.37	0.43	V	I <sub>F</sub> =0.5A
	V <sub>F2</sub>	-	0.44	0.49	V	I <sub>F</sub> =1.5A
Reverse current	I <sub>R</sub>	-	9.0	50	μA	V <sub>R</sub> =30V

